

Technical Information Sheet

d² Dura Slab Easylift 100



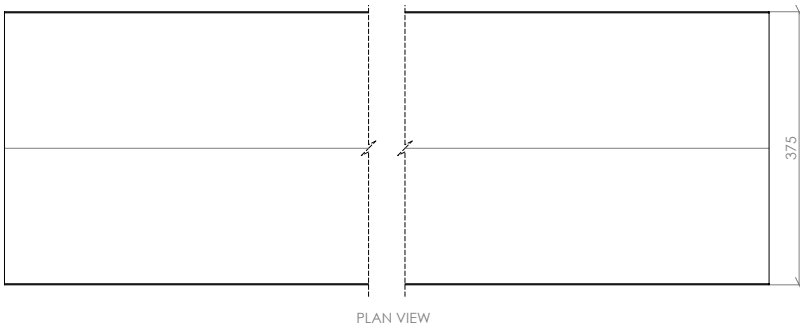
Product Description

Dura Slab structural flooring panels are suitable for use as trench and access covers and heavy duty floor slabs, both for new build construction and refurbishment applications. Their lightweight design dramatically reduces the cost of installation, maintenance and transport versus alternatives such as steel or concrete and panels can be fitted with in-built lifting eyes, making them easy to deploy, without compromising on strength and safety. Part of our d² product range, Dura Slab Easylift 100 is designed to meet the load requirements of EN 124 Class B 125, has a max span of 1900mm and achieves a Class B fire rating in accordance with BS EN 13501-1.

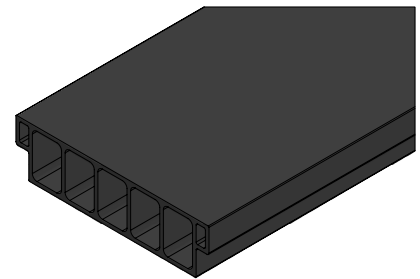
Product Details

Gritted Surface	Length (mm)	Width (mm)	Height (mm)	Colours / Product Codes	Panel Weight (kg)	Weight (kg/sqm)
Top	6000	375	100	Dark Grey (DG04020)	109.2	52
Bottom				Dark Grey (DG04021)		

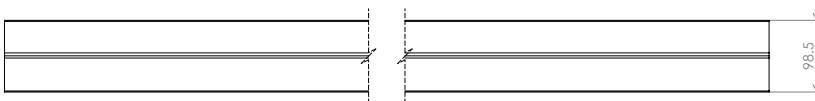
Top Panel



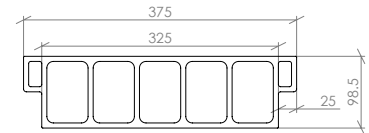
PLAN VIEW



ISOMETRIC VIEW

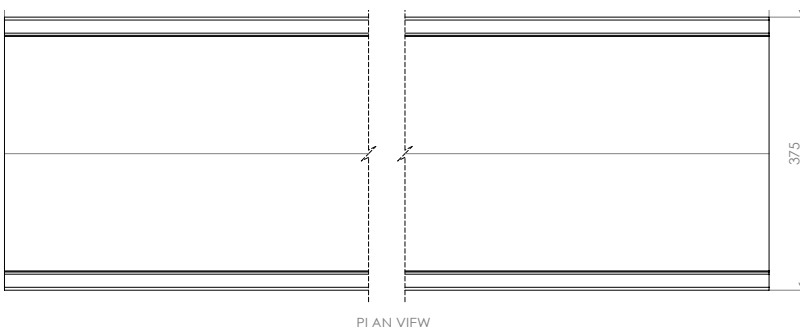


FRONT VIEW

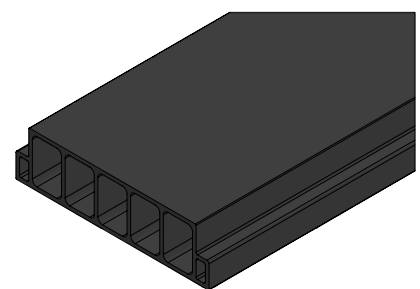


SIDE VIEW

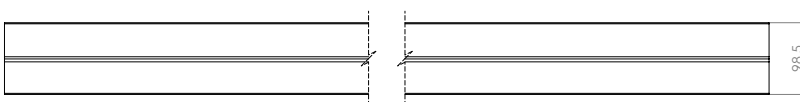
Bottom Panel



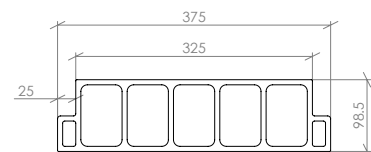
PLAN VIEW



ISOMETRIC VIEW



FRONT VIEW



SIDE VIEW

Product Applications

Common applications for d² Dura Slab Easylift 100 include trench covers, industrial flooring, work platforms, tank covers, service duct covers, bridge decking, mezzanines and walkways.

Packaging

Please see the below table for relevant packaging information for d² Dura Slab Easylift 100.

Packaging	Product Information	
	Double Pallet	Triple Pallet
Maximum Products Per Pallet	10	18
Pallet Dimensions (mm)	6010 x 750 x 1160	6010 x 1100 x 1160
Pallet Weight (kg)	1152	2025

Colours

Please see below for our d² Dura Slab RAL colours.

Dura Colours	RAL Number
Dark Grey ●	7043

*Other colours available by special order may be subject to extended lead times.

Material

Glass Reinforced Polymer (GRP) Pultruded d² Dura Slab Profiles are manufactured by combining resins with pure glassfibre reinforcement. They are formed and cured in a continuous process creating a product of extraordinary strength and resilience d² Dura Slab is resistant against a wide range of chemicals and temperature spectrums. Material samples are available on request, along with a copy of our chemical resistance data.

Test Performance Overview

4S Slider Pendulum Test	BS EN 13501-1	BS 4592	FACTA	EN 124
PTV: 72 (dry)*, 62 (wet)*	Class B	Compliant	Class C	Class B

*Maintains 95% of slip resistance after 1.1 million footfalls.

For more information please refer the Technical Installation Manual or speak to your Dura Composites Representative.

Safety Information

Use diamond tipped tools for cutting and wear mask and goggles when cutting or grinding. Cover exposed parts of the body. Wear gloves when moving or lifting. Product itself is not considered a hazardous waste. Please ensure that you abide by local laws and procedures regarding disposal if you choose not to upcycle or re-use your product at the end of its initial lifecycle.

Common Fixing Options

Some of the most common stainless steel fixing options are shown below. For a full list of fixings please see the d² Dura Grating brochure.



S/L/XL Dome Washer
(BFX01005/BFX01003/
FX01004)



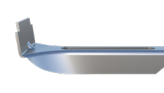
CAM Cover
(DRP0112)



Deep Recessed
Collar (FX01001)



Shallow Recessed
Collar (FXM8SRC)



J Clamp
(FX01128/9)

Warranty

25 year limited warranty available. Please register your product with us within 30 days of your invoice date. Visit www.duracomposites.com/warranty.