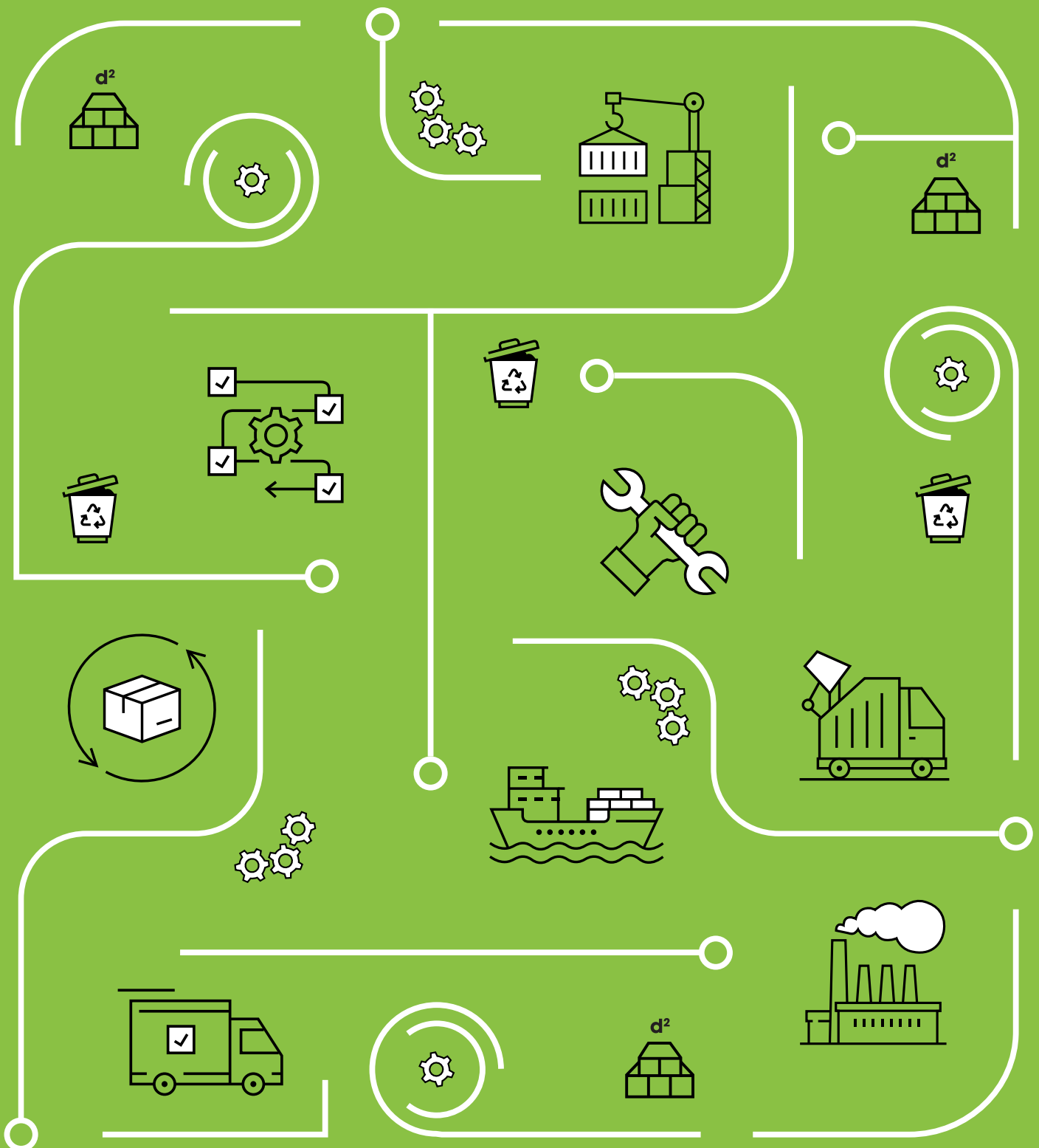


# EPD

Environmental  
Product Declaration



## d<sup>2</sup> Dura Slab Type 40 (64kg)



**The Lowest Carbon Walkways In The World**

# d² Dura Slab Type 40 (64kg)

Environmental Product Declaration | Type: Self-Declared



This covers all variants of d² Dura Slab Type 40 (64kg).

This is an ISO 14021 Type II EPD generated from a Life Cycle Assessment (LCA) performed using One Click LCA.

The results are a variant of a fully verified and published parent EPD and follow the Product Category Rules of EPD Hub Core PCR Version 1.2 (24 March 2025) and EN 15804+A2.

## Global Warming Potential (GWP)

The GWP quantifies a product’s contribution towards global warming and is sometimes referred to as its carbon footprint or embodied carbon.

Declared Unit		Mass of Declared Unit		GWP Total A1-A3		GWP Fossil A1-A3	
1	m²	16.8	kg	66.8	kg CO2e	65.3	kg CO2e



## Product Information

Product Name	d² Dura Slab Open Tongue and Groove Type 40 (64kg)
Product Description	<p>Our Glass Reinforced Polymer (GRP) Dura Slab panels offer a low-maintenance, durable and simple-to-install composite alternative to heavy &amp; cumbersome concrete flooring or short-life Plywood. With an innovative design that can include either manual lifting eyes or mechanical lifting arms, Dura Slab has an excellent strength-to-weight ratio, and its lightweight nature means routine inspections of the substructure can be made easily. Applications for pultruded Dura Slab include trench and gully covers, industrial flooring, work platforms, tank covers, drawpit covers, commercial decking, landings, bridge decking and mezzanine flooring.</p> <p>This EPD covers d² Dura Slab Open Tongue and Groove Type 40 (64kg) with a gritted surface finish. This slab has a thickness of 40mm and standard dimensions of 1037.5x3660mm, although bespoke sizes may be possible, and is available in Dark Grey; this EPD covers all colour and size where applicable. The mass used for these slabs is 16.8kg/m².</p>
Manufacturer	Dura Composites Ltd
Address	Dura House, Telford Road, Clacton-On-Sea, Essex, UK, CO15 4LP
About The Manufacturer	Dura Composites designs low-carbon GRP and aluminium walkway systems through its award-winning d² range. Serving industrial, rail, marine and architectural sectors, our products combine structural integrity with verified sustainability. Backed by three King’s Awards for Enterprise, EPDs, fire compliance and Scope 3 data, Dura is globally recognised for innovation and trusted delivery.
Parent EPD Number	HUB-1150
Place of Production	China, UK
Period for Data	2022

Lowest Carbon Walkways In The World

© Dura Composites 2025

T: +44 (0)1255 423601  
E: info@duracomposites.com  
W: www.duracomposites.com



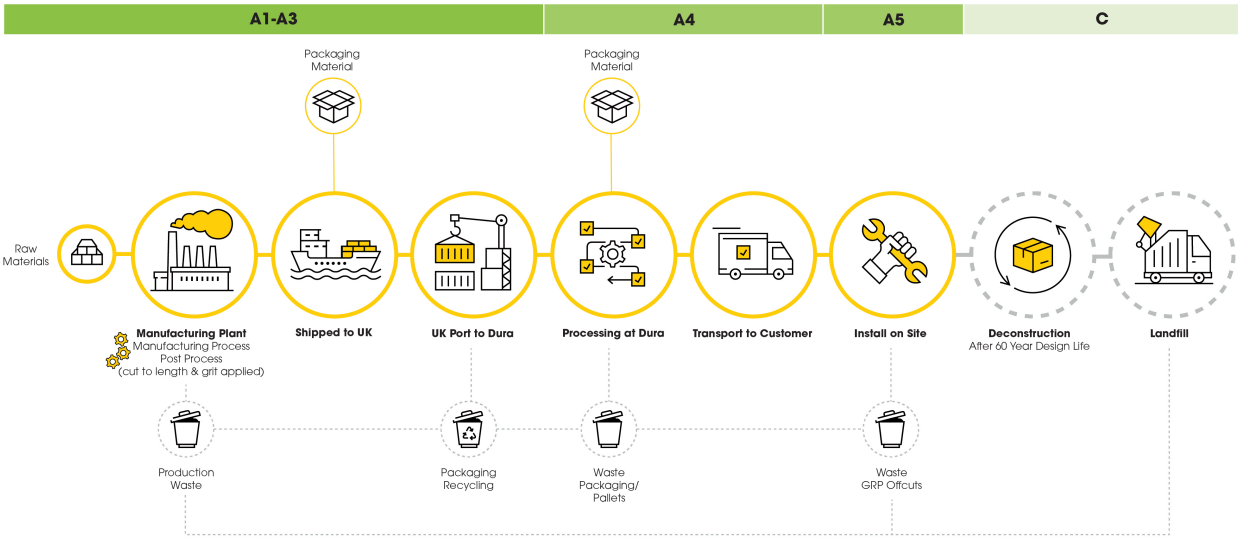
System Boundary

The LCA for this product has been performed for the following system boundary, the results for A1-A3 are provided in this EPD.

PRODUCT STAGE			CONSTRUCTION		USE STAGE							END OF LIFE STAGE				BEYOND THE SYSTEM BOUNDARY
A1	A2	A3	A4	A5	B1	B2	B3	B4	B5	B6	B7	C1	C2	C3	C4	D
X	X	X	X	MND	Modules Not Declared							X	X	X	X	X
Raw Materials	Transport To Site	Manufacturing	Transport	Construction	Use	Maintenance	Repair	Replacement	Refurbishment	Operational Energy	Operational Water	Deconstruction	Transport	Waste Processing	Disposal	Reuse, Recovery & Recycling

Scope of Assessment

The results have a cradle-to-gate scope, comprising raw materials extraction and supply (A1), transport (A2) and manufacturing (A3). The yellow highlights indicate the stages Dura Composites is involved in throughout the journey of the product.



Parent EPDs

The parent EPD used to generate this product variant has been third-party verified through EPD Hub. To access our independently verified EPDs, scan the QR code or visit [www.duracomposites.com/epd-reports](http://www.duracomposites.com/epd-reports).

