

d² Dura Quickspan Beam 117.5mm

Environmental Product Declaration | Type: Self-Declared



This covers all variants of d² Dura Quickspan Beam 117.5mm.

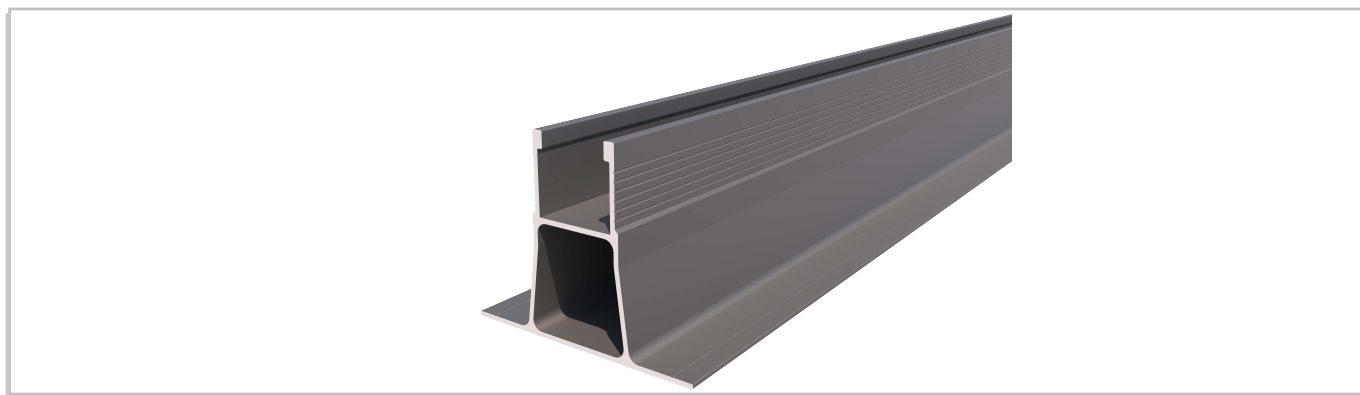
This is an ISO 14021 Type II EPD generated from a Life Cycle Assessment (LCA) performed using One Click LCA.

The results are a variant of a fully verified and published parent EPD and follow the Product Category Rules of EPD Hub Core PCR Version 1.2 (24 March 2025) and EN 15804+A2.

Global Warming Potential (GWP)

The GWP quantifies a product's contribution towards global warming and is sometimes referred to as its carbon footprint or embodied carbon.

Declared Unit		Mass		GWP Total A1-A3	GWP Fossil A1-A3
1	lm	3.83	kg	25.83 kg CO2e/lm	25.47 kg CO2e/lm



Product Information

Product Name	d ² Dura Quickspan Beam 117.5mm
Product Description	<p>d² Quickspan Beam (Patent No. GB 2005553.9) is part of the world's lowest carbon balcony decking components, designed to deliver performance and sustainability together. It combines the Dura Pedestal and Dura Bearer into a single integrated 'Quickspan' system that spans further, installs faster and reduces component count.</p> <p>Engineered to span up to 4.0m and support 3.0kN point loads with just 0.5% deflection, d² Quickspan Beam reduces beams and support points for cleaner layouts, faster progress and fewer interfaces with existing structures. Built-in pedestal functionality eliminates separate supports, holders and slope correctors.</p> <p>Our profiles are all made in the UK from UK manufactured Ingots which contain 68% recycled content. They are manufactured using the same extrusion process with differing dies.</p> <p>This EPD covers the Quickspan Beam 117.5 with standard lengths of 3,000mm, 4,000mm and 6,000mm in Anthracite, although other bespoke lengths and colours are available.</p>
Manufacturer	Dura Composites Ltd
Address	Dura House, Telford Road, Clacton-On-Sea, Essex, UK, CO15 4LP
About The Manufacturer	Dura Composites designs low-carbon GRP and Aluminium products and applications through its award-winning d ² range. Serving industrial, rail, marine and architectural sectors, our products combine structural integrity with verified sustainability. Backed by three King's Awards for Enterprise, EPDs, fire compliance and Scope 3 data, Dura is globally recognised for innovation and trusted delivery.
Parent EPD Number	HUB-3594
Place of Production	UK
Period for Data	Q4 2024

The World's Lowest Carbon Decking Components For Balcony Projects

© Dura Composites 2026

T: +44 (0)1255 423601
E: info@duracomposites.com
W: www.duracomposites.com



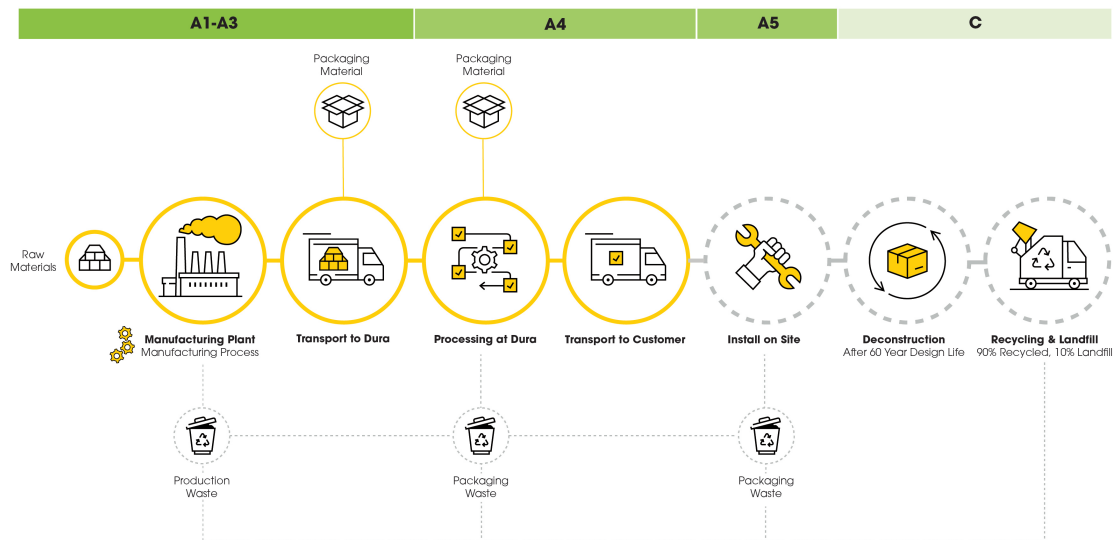
System Boundary

The LCA for this product has been performed for the following system boundary, the results for A1-A3 are provided in this EPD.

PRODUCT STAGE			CONSTRUCTION		USE STAGE							END OF LIFE STAGE				BEYOND THE SYSTEM BOUNDARY
A1	A2	A3	A4	A5	B1	B2	B3	B4	B5	B6	B7	C1	C2	C3	C4	D
X	X	X	X	MND	Modules Not Declared							X	X	X	X	X
Raw Materials	Transport To Site	Manufacturing	Transport	Construction	Use	Maintenance	Repair	Replacement	Refurbishment	Operational Energy	Operational Water	Deconstruction	Transport	Waste Processing	Disposal	Reuse, Recovery & Recycling

Scope of Assessment

The results have a cradle-to-gate scope, comprising raw materials extraction and supply (A1), transport (A2) and manufacturing (A3). The yellow highlights indicate the stages Dura Composites is involved in throughout the journey of the product.



Parent EPDs

The parent EPD used to generate this product variant has been third-party verified through EPD Hub. To access our independently verified EPDs, scan the QR code or visit www.duracomposites.com/epd-reports.



The World's Lowest Carbon Decking Components For Balcony Projects

© Dura Composites 2026

T: +44 (0)1255 423601
E: info@duracomposites.com
W: www.duracomposites.com

