

Environmental Product Declaration



d² Dura Platform Type 40 Coper Panel

Environmental Product Declaration | Type: Self-Declared



This covers all variants of d² Dura Platform Type 40 Coper Panel

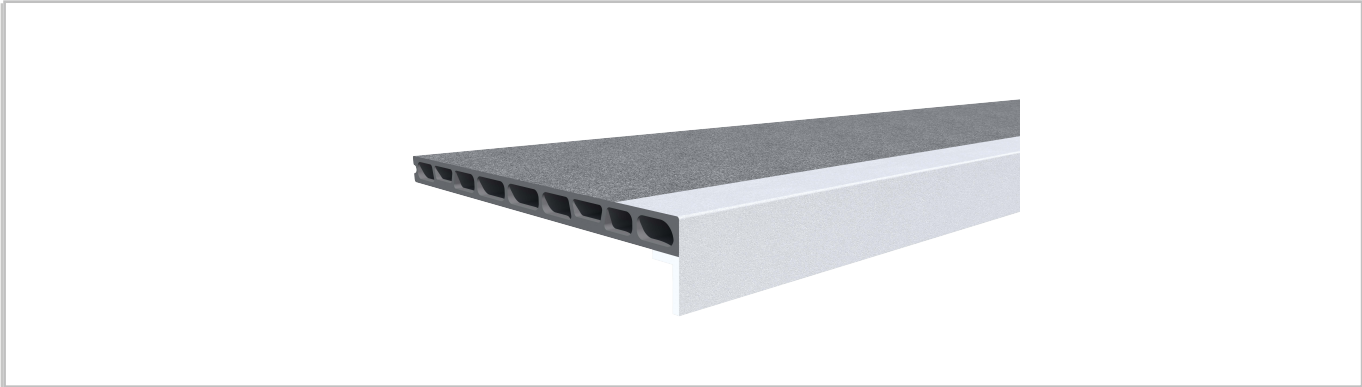
This is an ISO 14021 Type II EPD generated from a Life Cycle Assessment (LCA) performed using One Click LCA.

The results are a variant of a fully verified and published parent EPD and follow the Product Category Rules of EPD Hub Core PCR Version 1.2 (24 March 2025) and EN 15804+A2.

Global Warming Potential (GWP)

The GWP quantifies a product’s contribution towards global warming and is sometimes referred to as its carbon footprint or embodied carbon.

Declared Unit		Mass of Declared Unit		GWP Total A1-A3		GWP Fossil A1-A3	
1	m²	40.7	kg	161	kg CO2e	158	kg CO2e



Product Information

Product Name	d² Dura Platform Type 40 Coper Panel
Product Description	<p>The d² Dura Platform range combines high-strength pultruded composites with significantly reduced embodied carbon, delivering long-life, corrosion-resistant performance for rail environments. Engineered to be lighter, more durable and materially efficient, the system supports circular-economy goals through reduced raw material use and verified carbon savings, enabling sustainable, high-performance platform upgrades. Its lightweight nature allows routine inspections of the substructure to be carried out easily, and when used as a platform-extension system it helps increase passenger capacity while reducing substructure work and associated material costs.</p> <p>This EPD covers d² Dura Platform Coper Panel with a gritted surface finish. This profile has a thickness of 40mm and standard dimensions of 2995x600mm, although bespoke lengths may be possible, and is available in Dark Grey Tri-Tone - this EPD covers all colour and size variants where applicable. The mass used for these slabs is 40.69kg/m².</p>
Manufacturer	Dura Composites Ltd
Address	Dura House, Telford Road, Clacton-On-Sea, Essex, UK, CO15 4LP
About The Manufacturer	Dura Composites delivers high-performance, low-carbon GRP and aluminium systems for industrial, rail, marine and architectural environments. Our award-winning d² range reduces embodied carbon and raw material use, supporting circular-economy goals. Backed by EPDs, Scope 3 reporting and three King’s Awards for Enterprise, we deliver the lowest-carbon composite walkways in the world, directly supporting the UK’s 2050 net-zero target.
Parent EPD Number	HUB-1150
Place of Production	China, UK
Period for Data	2022

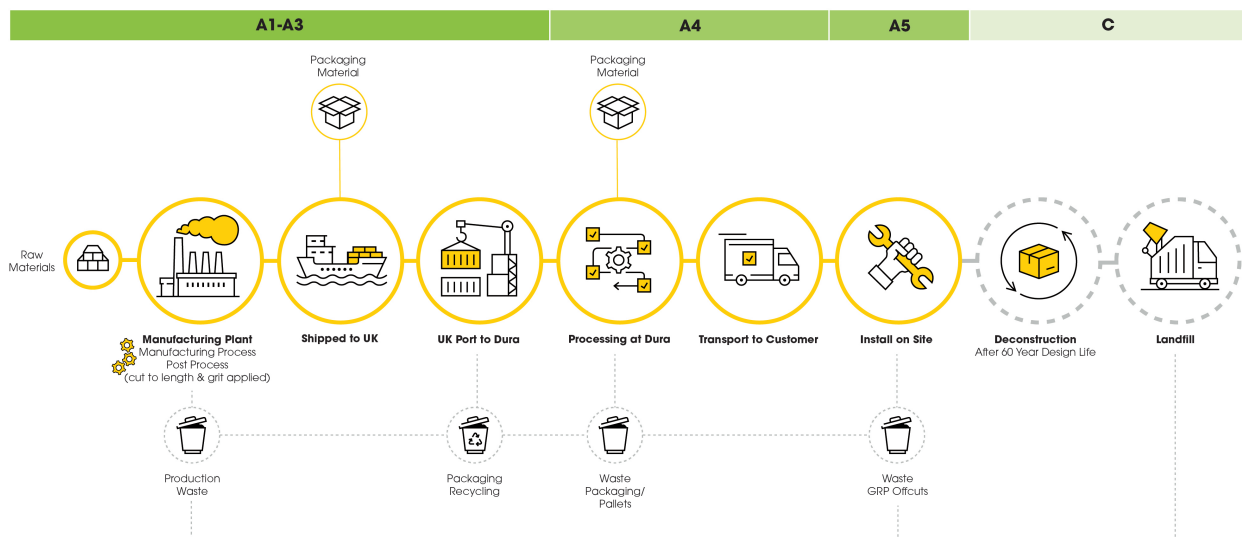
System Boundary

The LCA for this product has been performed for the following system boundary, the results for A1-A3 are provided in this EPD.

PRODUCT STAGE			CONSTRUCTION		USE STAGE							END OF LIFE STAGE				BEYOND THE SYSTEM BOUNDARY
A1	A2	A3	A4	A5	B1	B2	B3	B4	B5	B6	B7	C1	C2	C3	C4	D
X	X	X	X	MND	Modules Not Declared							X	X	X	X	X
Raw Materials	Transport To Site	Manufacturing	Transport	Construction	Use	Maintenance	Repair	Replacement	Refurbishment	Operational Energy	Operational Water	Deconstruction	Transport	Waste Processing	Disposal	Reuse, Recovery & Recycling

Scope of Assessment

The results have a cradle-to-gate scope, comprising raw materials extraction and supply (A1), transport (A2) and manufacturing (A3). The yellow highlights indicate the stages Dura Composites is involved in throughout the journey of the product.



Parent EPDs

The parent EPD used to generate this product variant has been third-party verified through EPD Hub. To access our independently verified EPDs, scan the QR code or visit www.duracomposites.com/epd-reports.

