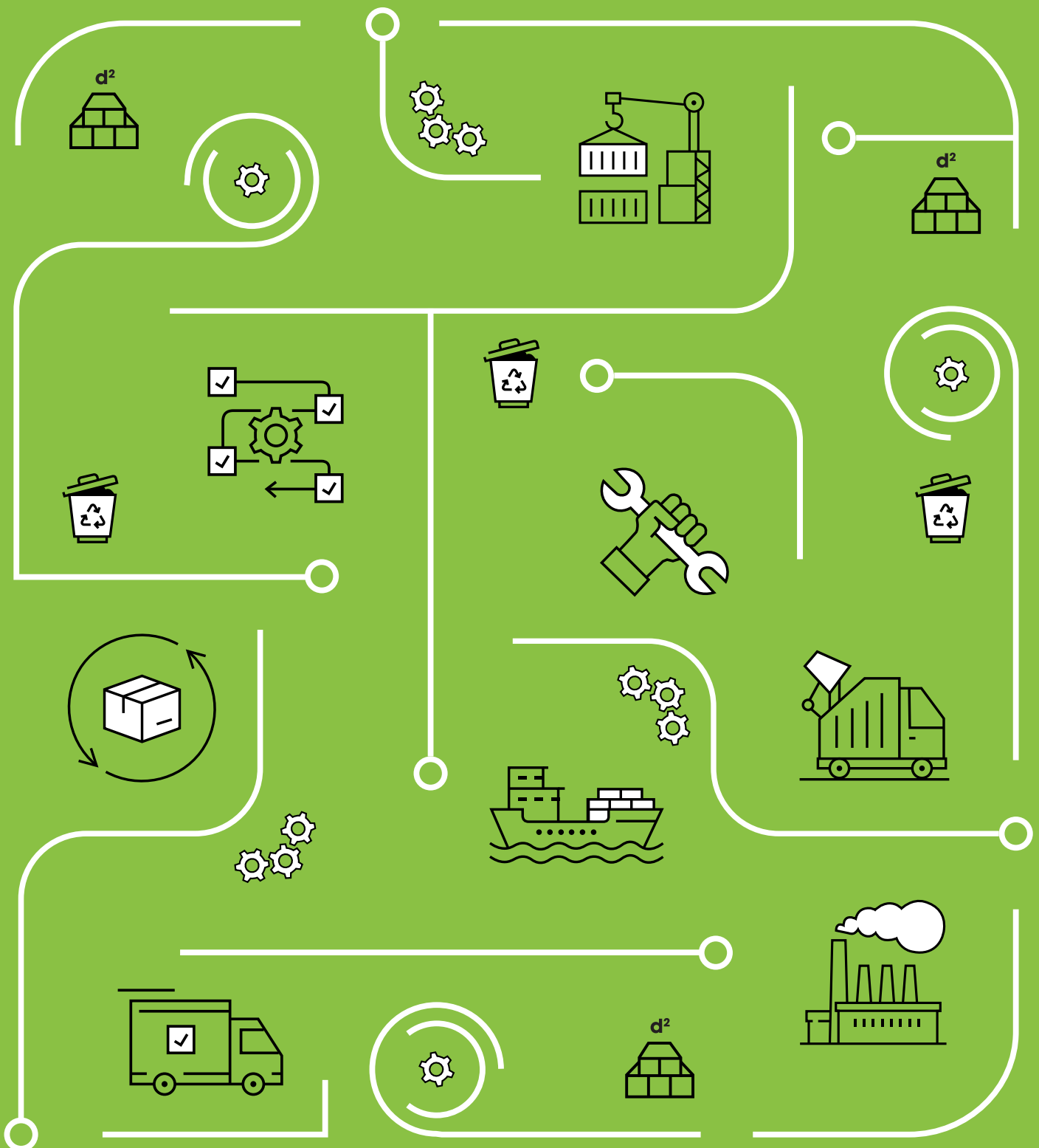


EPD

Environmental
Product Declaration



d² Dura Grating 50mm Standard Mesh Rectangular



The Lowest Carbon Walkways In The World

d² Dura Grating 50mm Standard Mesh Rectangular

Environmental Product Declaration | Type: Self-Declared



This covers all variants of d² Dura 50mm Standard Mesh Rectangular.

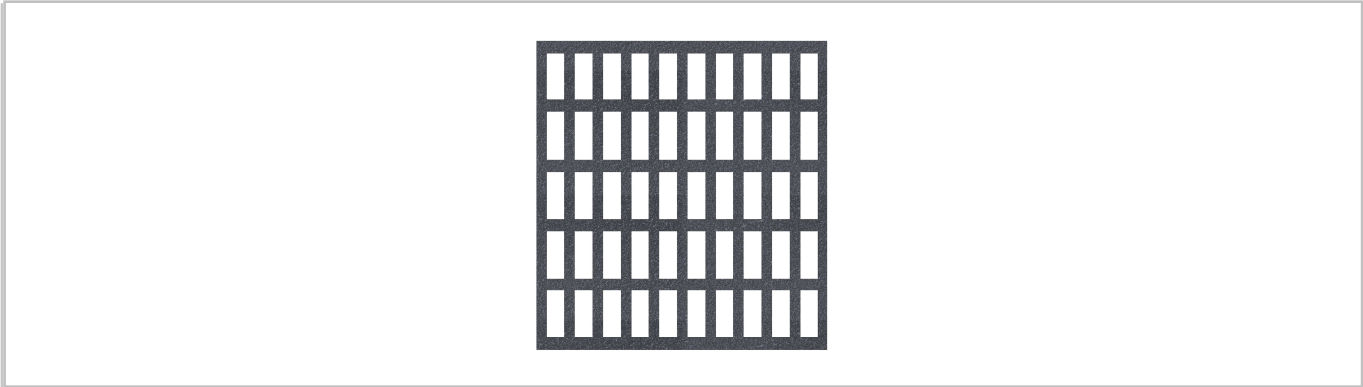
This is an ISO 14021 Type II EPD generated from a Life Cycle Assessment (LCA) performed using One Click LCA.

The results are a variant of a fully verified and published parent EPD and follow the Product Category Rules of EPD Hub Core PCR Version 1.2 (24 March 2025) and EN 15804+A2.

Global Warming Potential (GWP)

The GWP quantifies a product’s contribution towards global warming and is sometimes referred to as its carbon footprint or embodied carbon.

Declared Unit		Mass of Declared Unit		GWP Total A1-A3		GWP Fossil A1-A3	
1	m²	34.0	kg	119.6	kg CO2e	119.4	kg CO2e



Product Information

Product Name	d² Dura 50mm Standard Mesh Rectangular
Product Description	<p>d² Dura Grating Standard Mesh Rectangular is a high-performance collection of Glass Reinforced Polymer (GRP) moulded grating panels, offering versatility for a wide range of applications. Compared to traditional GRP grating, d² Dura Grating reduces material consumption and lowers CO₂ impact. Its lightweight nature facilitates easier handling and faster installation, enhancing cost efficiency. Engineered for exceptional structural performance, it provides high load-bearing capacity with optimised material usage, ensuring long-term durability and safety.</p> <p>This EPD covers d² Dura Grating Standard Mesh Rectangular 50mm which is available in 978.5x765mm. These panels are available in Dark Grey, Yellow, and Green - this EPD covers all size and colour variants for the Standard Mesh Rectangular 50mm panels. The mass used for these panels is 34kg/m².</p>
Manufacturer	Dura Composites Ltd
Address	Dura House, Telford Road, Clacton-On-Sea, Essex, UK, CO15 4LP
About The Manufacturer	Dura Composites designs low-carbon GRP and aluminium walkway systems through its award-winning d² range. Serving industrial, rail, marine and architectural sectors, our products combine structural integrity with verified sustainability. Backed by three King’s Awards for Enterprise, EPDs, fire compliance and Scope 3 data, Dura is globally recognised for innovation and trusted delivery.
Parent EPD Number	HUB-3303
Place of Production	China, UK
Period for Data	2024

Lowest Carbon Walkways In The World

© Dura Composites 2025

T: +44 (0)1255 423601
E: info@duracomposites.com
W: www.duracomposites.com



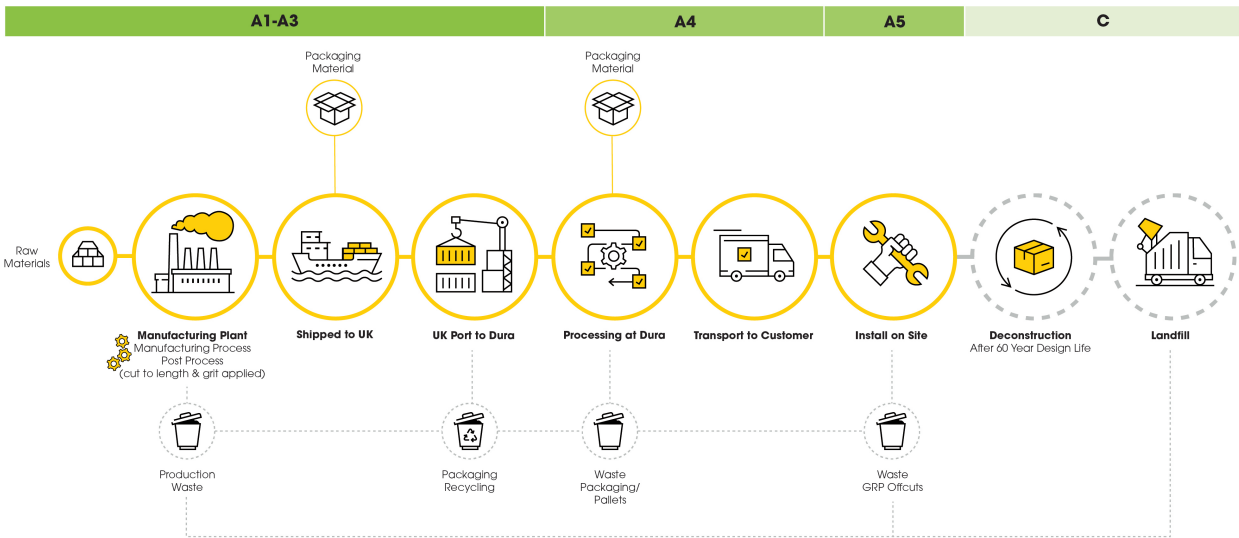
System Boundary

The LCA for this product has been performed for the following system boundary, the results for A1-A3 are provided in this EPD.

PRODUCT STAGE			CONSTRUCTION		USE STAGE							END OF LIFE STAGE				BEYOND THE SYSTEM BOUNDARY
A1	A2	A3	A4	A5	B1	B2	B3	B4	B5	B6	B7	C1	C2	C3	C4	D
X	X	X	X	MND	Modules Not Declared							X	X	X	X	X
Raw Materials	Transport To Site	Manufacturing	Transport	Construction	Use	Maintenance	Repair	Replacement	Refurbishment	Operational Energy	Operational Water	Deconstruction	Transport	Waste Processing	Disposal	Reuse, Recovery & Recycling

Scope of Assessment

The results have a cradle-to-gate scope, comprising raw materials extraction and supply (A1), transport (A2) and manufacturing (A3). The yellow highlights indicate the stages Dura Composites is involved in throughout the journey of the product.



Parent EPDs

The parent EPD used to generate this product variant has been third-party verified through EPD Hub. To access our independently verified EPDs, scan the QR code or visit www.duracomposites.com/epd-reports.

