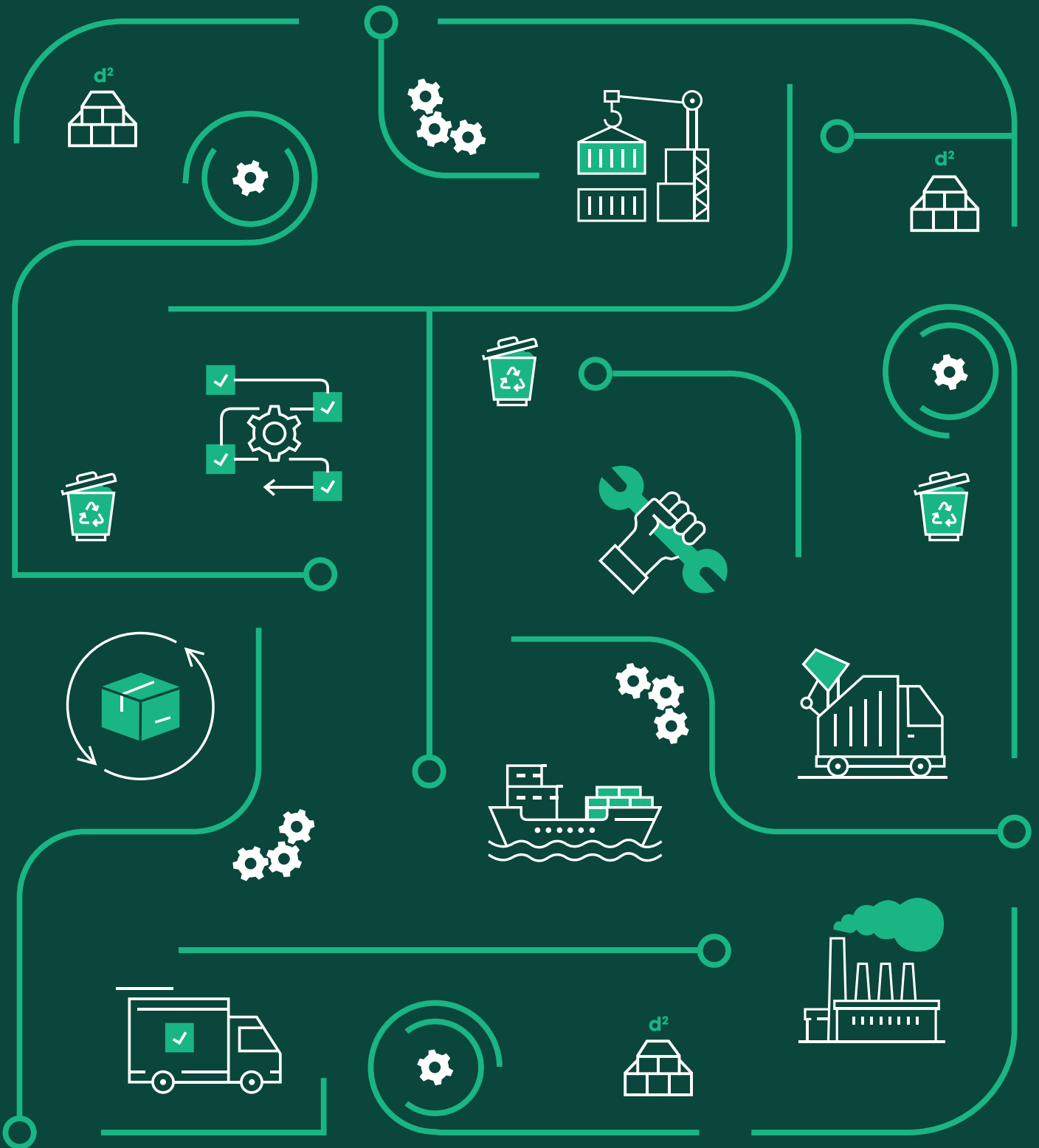


EPD

Environmental
Product Declaration



d² Dura Grating 29mm Solid Top



The **Lowest Carbon Walkways In The World**

d² Dura Grating 29mm Solid Top

Environmental Product Declaration | Type: Self-Declared



This covers all variants of d² Dura Grating 29mm Solid Top.

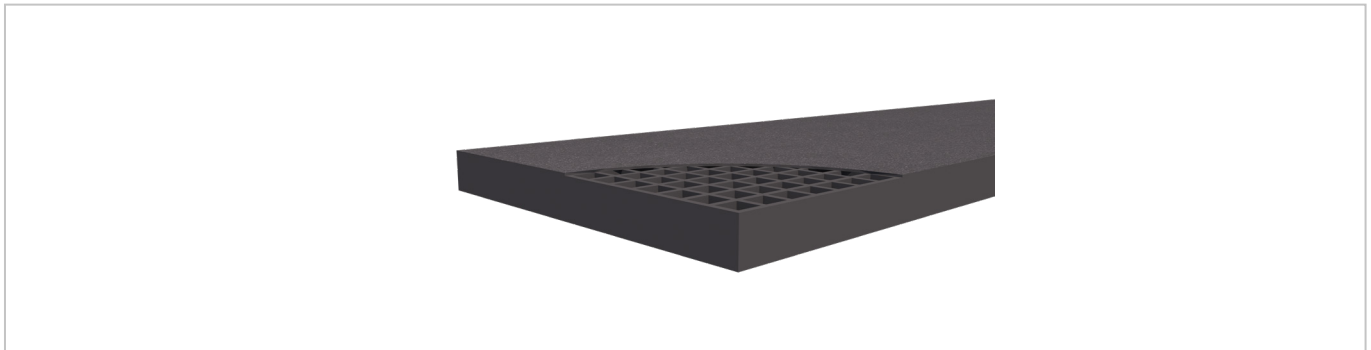
This is an ISO 14021 Type II EPD generated from a Life Cycle Assessment (LCA) performed using One Click LCA.

The results are a variant of a fully verified and published parent EPD and follow the Product Category Rules of EPD Hub Core PCR Version 1.2 (24 March 2025) and EN 15804+A2.

Global Warming Potential (GWP)

The GWP quantifies a product's contribution towards global warming and is sometimes referred to as its carbon footprint or embodied carbon.

Declared Unit	Mass of Declared Unit	GWP Total A1-A3	GWP Fossil A1-A3
1m ²	16.7kg	58.8kg CO ₂ e	58.6kg CO ₂ e



Product Information

Product Name	d ² Dura Grating 29mm Solid Top
Product Description	<p>d² Dura Grating Solid Top is a high-performance collection of Glass Reinforced Polymer (GRP) moulded grating panels, offering versatility for a wide range of applications. Compared to traditional GRP grating, d² Dura Grating is up to 33% lighter, reducing material consumption and lowering CO₂ impact. Its lightweight nature facilitates easier handling and faster installation, enhancing cost efficiency. Engineered for exceptional structural performance, it provides high load-bearing capacity with optimised material usage, ensuring long-term durability and safety.</p> <p>This EPD covers d² Dura Grating Solid Top 29mm which is available in sizes 3043x993mm and 3699x1239mm. These panels are available in Dark Grey - this EPD covers all size and colour variants for the Solid Top 29mm panels. The mass used for these panels is 16.7kg/m².</p>
Manufacturer	Dura Composites Ltd
Address	Dura House, Telford Road, Clacton-On-Sea, Essex, UK, CO15 4LP
About The Manufacturer	<p>Dura Composites delivers high-performance, low-carbon GRP and aluminium systems for industrial, rail, marine and architectural environments. Our award-winning d² range reduces embodied carbon and raw material use, supporting circular-economy goals. Backed by EPDs, Scope 3 reporting and four King's Awards for Enterprise in Sustainability, Innovation & International Trade. We deliver the lowest-carbon composite walkways in the world, directly supporting the UK's 2050 net-zero target.</p>
Parent EPD Number	HUB-3303
Place of Production	China, UK
Period for Data	2024

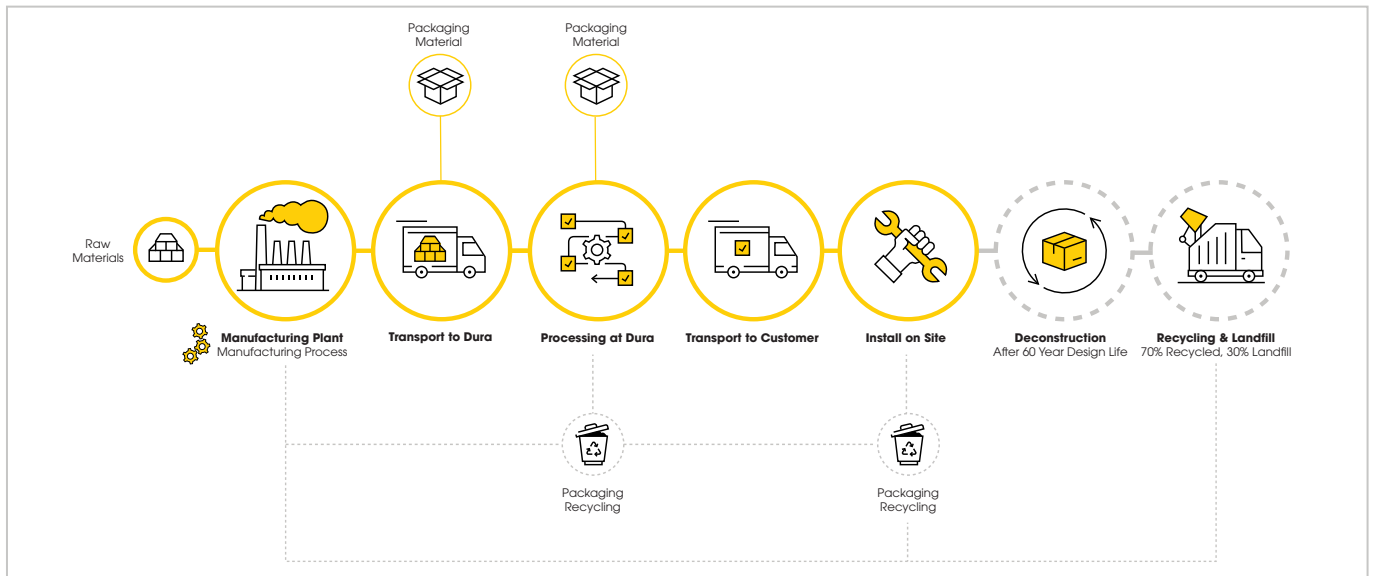
System Boundary

The LCA for this product has been performed for the following system boundary, the results for A1-A3 are provided in this EPD.

PRODUCT STAGE			CONSTRUCTION		USE STAGE							END OF LIFE STAGE				BEYOND THE SYSTEM BOUNDARY
A1	A2	A3	A4	A5	B1	B2	B3	B4	B5	B6	B7	C1	C2	C3	C4	D
X	X	X	X	MND	Modules Not Declared							X	X	X	X	X
Raw Materials	Transport To Site	Manufacturing	Transport	Construction	Use	Maintenance	Repair	Replacement	Refurbishment	Operational Energy	Operational Water	Deconstruction	Transport	Waste Processing	Disposal	Reuse, Recovery & Recycling

Scope of Assessment

The results have a cradle-to-gate scope, comprising raw materials extraction and supply (A1), transport (A2) and manufacturing (A3). The yellow highlights indicate the stages Dura Composites is involved in throughout the journey of the product.



Parent EPDs

The parent EPD used to generate this product variant has been third-party verified through EPD Hub. To access our independently verified EPDs, scan the QR code or visit www.duracomposites.com/epd-reports.

