

Product Datasheet

d² Dura Slab Type 75

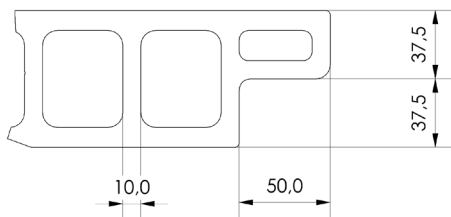
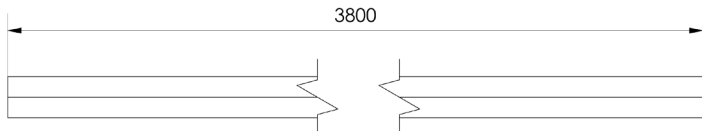
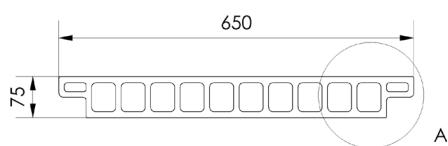


Product Description

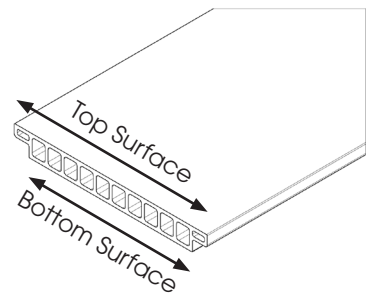
Dura Slab structural flooring panels are suitable for use as trench and access covers and heavy duty floor slabs, both for new build construction and refurbishment applications. Their lightweight design dramatically reduces the cost of installation, maintenance and transport versus alternatives such as steel or concrete and panels can be fitted with in-built lifting eyes, making them easy to deploy, without compromising on strength and safety. Part of Dura Composites d² product range, Dura Slab 75 achieves a Class B fire rating according to BS EN 13501-1 and has an advanced anti-slip surface tested to an incredible 1 million footfalls.

Product Details

Gritted Surface	Length (mm)	Width (mm)	Height (mm)	Colours / Product Codes	Panel Weight (kg)	Weight (kg/sqm)
Top	3800	650	75	Dark Grey (DS03052), Yellow (DS03054), Grey (DS03050)	135	54.66
Bottom				Dark Grey (DS03053), Yellow (DS03055), Grey (DS03051)		



DETAIL A



Product Applications

Common applications for d² Dura Slab Type 75 include trench covers, industrial flooring, work platforms, tank covers, service duct covers, bridge decking, mezzanines and walkways.

Packaging

Please see the below table for relevant packaging information for d² Dura Slab Type 75.

Packaging	Product Information
Maximum Products Per Pallet	8
Pallet Dimensions (mm)	3810 x 1000 x 760
Pallet Weight (kg)	1140

Colours

Please see below for our d² Dura Slab RAL colours.

Dura Colours	RAL Number
Dark Grey	7043
Yellow	1012
Grey	7047

Material

Glass Reinforced Polymer (GRP) Pultruded d² Dura Slab Profiles are manufactured by combining resins with pure glassfibre reinforcement. They are formed and cured in a continuous process creating a product of extraordinary strength and resilience d² Dura Slab is resistant against a wide range of chemicals and temperature spectrums. Material samples are available on request, along with a copy of our chemical resistance data.

Test Performance Overview

4S Slider Pendulum Test	BS EN 13501-1	BS 4592	FACTA	EN 124
PTV: 72 (dry)*, 62 (wet)*	Class B	Compliant	Class D	Class C

*Maintains 95% of slip resistance after 1.1 million footfalls.

For more information please refer the Technical Installation Manual or speak to your Dura Composites Representative.

Load and Deflection Data

Deflection is shown in millimetres (mm), with all columns denoting clear spans. Green/red cell colours indicate above and below L/100, which is the equivalent of 1% deflection. To view data for alternative standard load deflection such as L/200, or specific data for your project, visit www.duracomposites.com/power-of-composites.

Point Load (PL)

	1250mm	1500mm	1750mm	2000mm	2250mm	2500mm
15.0 kN/ PL	1.9	3.3	4.7	6.1	7.5	9.4
20.0 kN/ PL	2.7	4.5	6.3	8.2	10.3	13.1
25.0 kN/ PL	3.5	5.7	7.9	10.3	13.1	16.8
30.0 kN/ PL	4.2	6.7	9.4	12.3	15.9	20.5
35.0 kN/ PL	4.9	7.7	10.9	14.3	18.7	24.2
40.0 kN/ PL	5.5	8.7	12.3	16.4	21.5	27.9

Maximum Spans (mm)

Load	L/100	L/200
15 kN	3770	2900
20 kN	3450	2420
25 kN	3130	1950
30 kN	2830	1640
35 kN	2560	1460
40 kN	2330	1360

Uniformly Distributed Loads (UDL)

	2000mm	2250mm	2500mm	2750mm	3000mm	3250mm
5.0 kN/ UDL	1.7	2.6	3.8	5.5	7.6	10.2
8.0 kN/ UDL	2.6	3.9	5.8	8.4	11.7	15.6
11.0 kN/ UDL	3.4	5.2	7.8	11.3	15.7	21.1
14.0 kN/ UDL	4.3	6.7	10.1	14.4	19.9	26.5
17.0 kN/ UDL	5.4	8.6	12.7	17.9	24.2	31.9
20.0 kN/ UDL	7.2	11	15.8	21.6	28.7	37.2

Maximum Spans (mm)

Load	L/100	L/200
5 kN	3800	3800
8 kN	3800	3300
11 kN	3800	2950
14 kN	3530	2700
17 kN	3280	2480
20 kN	3060	2270

Safety Information

It is advisable to undertake a risk assessment, with particular focus on manual handling procedures. Wear appropriate gloves and coveralls to shield skin from abrasions. If shaping the product, it is essential to factor in the potential production of dust. To mitigate this, it is vital to either suppress the dust at source or employ effective extraction methods. We strongly recommend the use of appropriate respiratory protective equipment (RPE), specifically filtering facepiece class 3 (FFP3) masks, alongside adequate eye protection to guard against dust.

Recyclability

Return to manufacturer or downcycle.

Sustainability

The embodied carbon for A1-A3 (production stage) as defined in BS EN 15804 is 3.13kg CO₂ eq/kg.

Common Fixing Options

Some of the most common stainless steel fixing options are shown below.



S/L/XL Dome Washer
(BFX01005/BFX01003/
FX01004)



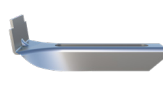
CAM Cover
(DRP0112)



Deep Recessed
Collar (FX01001)



Shallow Recessed
Collar (FXM8SRC)



J Clamp
(FX01128/9)

Warranty

25 year limited warranty available. Please register your product with us within 30 days of your invoice date. Visit www.duracomposites.com/warranty.