

# Product Datasheet

## d<sup>2</sup> Dura Slab Type 50

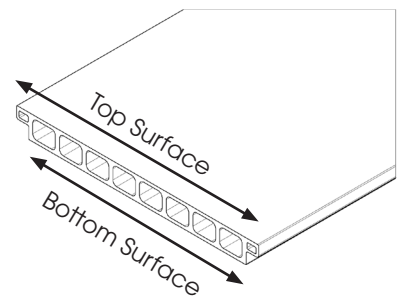
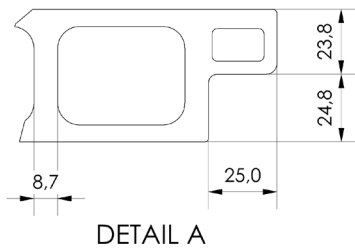
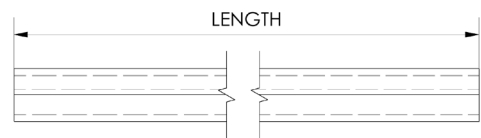
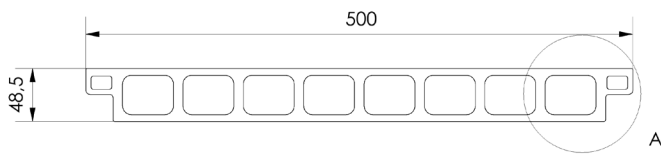


### Product Description

Dura Slab structural flooring panels are suitable for use as trench and access covers and heavy duty floor slabs, both for new build construction and refurbishment applications. Their lightweight design dramatically reduces the cost of installation, maintenance and transport versus alternatives such as steel or concrete and panels can be fitted with in-built lifting eyes, making them easy to deploy, without compromising on strength and safety. Part of Dura Composites d<sup>2</sup> product range, Dura Slab 50 achieves a Class B fire rating according to BS EN 13501-1 and has an advanced anti-slip surface tested to an incredible 1 million footfalls.

### Product Details

Gritted Surface	Length (mm)	Width (mm)	Height (mm)	Colours / Product Codes	Panel Weight (kg)	Weight (kg/sqm)
Top	3660	500	50	Grey (DS03002), Yellow (DS03004), Dark Grey C1 (DS03008), Dark Grey C2 (DS03006), Tri-Tone (DS03018)	72	39.35
Bottom				Grey (DS03003), Yellow (DS03005), Dark Grey C1 (DS03009), Dark Grey C2 (DS03007), Tri-Tone (DS03019)		



### Product Applications

Common applications for d<sup>2</sup> Dura Slab Type 50 include trench covers, industrial flooring, work platforms, tank covers, service duct covers, bridge decking, mezzanines and walkways.

### Packaging

Please see the below table for relevant packaging information for d<sup>2</sup> Dura Slab Type 50.

Packaging	Product Information
Maximum Products Per Pallet	20
Pallet Dimensions (mm)	3660 x 950 x 680
Pallet Weight (kg)	1500

### Colours

Please see below for our d<sup>2</sup> Dura Slab RAL colours.

Dura Colours	RAL Number
Dark Grey ●	7043
Grey ●	7047
Yellow ●	1012

### Material

Glass Reinforced Polymer (GRP) Pultruded d<sup>2</sup> Dura Slab Profiles are manufactured by combining resins with pure glassfibre reinforcement. They are formed and cured in a continuous process creating a product of extraordinary strength and resilience d<sup>2</sup> Dura Slab is resistant against a wide range of chemicals and temperature spectrums. Material samples are available on request, along with a copy of our chemical resistance data.

## Test Performance Overview

4S Slider Pendulum Test	BS EN 13501-1	BS 4592	FACTA	EN 124
PTV: 72 (dry)*, 62 (wet)*	Class B	Compliant	Class C	Class B

\*Maintains 95% of slip resistance after 1.1 million footfalls.

For more information please refer the Technical Installation Manual or speak to your Dura Composites Representative.

## Load and Deflection Data

Deflection is shown in millimetres (mm), with all columns denoting clear spans. Green/red cell colours indicate above and below L/100, which is the equivalent of 1% deflection. To view data for alternative standard load deflection such as L/200, or specific data for your project, visit [www.duracomposites.com/power-of-composites](http://www.duracomposites.com/power-of-composites).

### Point Load (PL)

	1000mm	1250mm	1500mm	1750mm	2000mm	2250mm
3.0 kN/ PL	0	0	1.1	3.4	5.2	6.1
6.0 kN/ PL	0.2	1.2	3.8	7.1	10.1	12.4
9.0 kN/ PL	1.2	2.9	6.4	10.9	15.1	18.8
12.0 kN/ PL	2.2	4.7	9	14.6	20.2	25.3
15.0 kN/ PL	3.3	6.4	11.5	18.3	25.2	31.8
18.0 kN/ PL	4.3	8.1	14	21.8	30.2	38.3

### Maximum Spans (mm)

Load	L/100	L/200
3 kN	3660	3040
6 kN	3220	1960
9 kN	2590	1600
12 kN	1990	1390
15 kN	1710	1230
18 kN	1560	1100

### Uniformly Distributed Loads (UDL)

	1000mm	1250mm	1500mm	1750mm	2000mm	2250mm
5.0 kN/ UDL	0.4	0.9	1.9	3.3	5.3	8.4
10.0 kN/ UDL	0.7	1.7	3.5	6.1	10.2	16.2
15.0 kN/ UDL	0.7	2.3	5	9.4	15.8	24.9
20.0 kN/ UDL	0.7	3.2	7.8	14.6	23.7	35.5
25.0 kN/ UDL	1.4	5.5	12	20.9	32.4	46.5
30.0 kN/ UDL	2.3	8	16.4	27.3	41	57.5

### Maximum Spans (mm)

Load	L/100	L/200
5 kN	3210	2480
10 kN	2520	1990
15 kN	2170	1710
20 kN	1870	1480
25 kN	1630	1290
30 kN	1450	1160

## Safety Information

It is advisable to undertake a risk assessment, with particular focus on manual handling procedures. Wear appropriate gloves and coveralls to shield skin from abrasions. If shaping the product, it is essential to factor in the potential production of dust. To mitigate this, it is vital to either suppress the dust at source or employ effective extraction methods. We strongly recommend the use of appropriate respiratory protective equipment (RPE), specifically filtering facepiece class 3 (FFP3) masks, alongside adequate eye protection to guard against dust.

## Recyclability

Return to manufacturer or downcycle.

## Sustainability

The embodied carbon for A1-A3 (production stage) as defined in BS EN 15804 is 3.13kg CO<sub>2</sub> eq/unit.

## Common Fixing Options

Some of the most common stainless steel fixing options are shown below.



M/S/L/XL  
Dome Washer  
(BFX01004/ BFX01005/  
BFX01003/FX01004)



Shallow Recessed  
Collar (FXM8SRC)

## Warranty

25 year limited warranty available. Please register your product with us within 30 days of your invoice date. Visit [www.duracomposites.com/warranty](http://www.duracomposites.com/warranty).