

Product Datasheet

d² Dura Slab Type 40 (31kg)

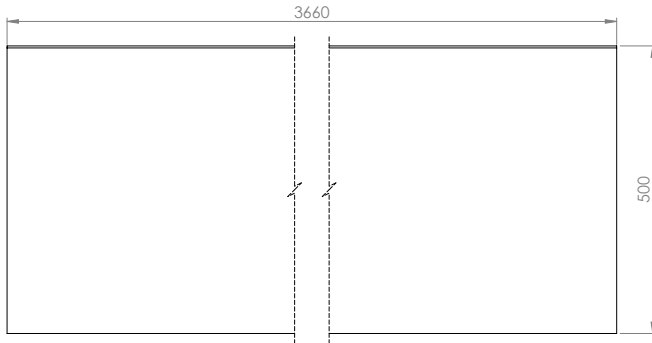
Product Description



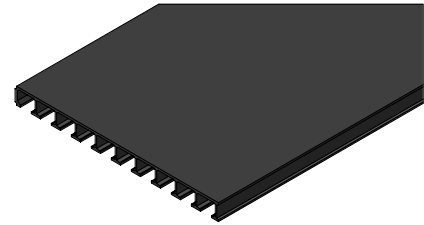
Dura Slab structural flooring panels are suitable for use as trench and access covers and heavy duty floor slabs, both for new build construction and refurbishment applications. Their lightweight design dramatically reduces the cost of installation, maintenance and transport versus alternatives such as steel or concrete and panels can be fitted with in-built lifting eyes, making them easy to deploy, without compromising on strength and safety. Part of Dura Composites d² product range, Dura Slab 40 achieves a Class B fire rating according to BS EN 13401-1 and has an advanced anti-slip surface tested to an incredible 1 million footfalls.

Product Details

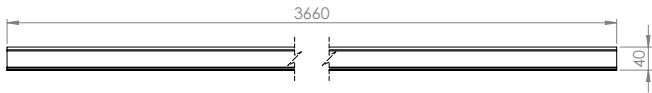
Length (mm)	Width (mm)	Height (mm)	Colours / Product Codes	Panel Weight (kg)	Weight (kg/sqm)
3660	400	40	Dark Grey (DS01006)	31	17.2



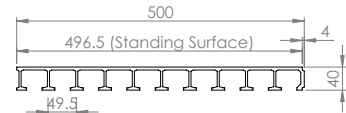
PLAN VIEW



ISOMETRIC VIEW



FRONT VIEW



SIDE VIEW

Product Applications

Common applications for d² Dura Slab Type 40 include trench covers, industrial flooring, work platforms, tank covers, service duct covers, bridge decking, mezzanines and walkways.

Packaging

Please see the below table for relevant packaging information for d² Dura Slab Type 40.

Packaging	Product Information
Maximum Products Per Pallet	20
Pallet Dimensions (mm)	366 x 100 x 61
Pallet Weight (kg)	690

Colours

Please see below for our d² Dura Slab RAL colours.

Dura Colours	RAL Number
Dark Grey ●	7043

Material

Glass Reinforced Polymer (GRP) Pultruded d² Dura Slab Profiles are manufactured by combining resins with pure glassfibre reinforcement. They are formed and cured in a continuous process creating a product of extraordinary strength and resilience d² Dura Slab is resistant against a wide range of chemicals and temperature spectrums. Material samples are available on request, along with a copy of our chemical resistance data.

Test Performance Overview

4S Slider Pendulum Test	BS EN 13401-1	BS 4592	BS 6399-1 :1996
PTV: 72 (dry)*, 62 (wet)*	Class B	Compliant	C2 & C5

*Maintains 95% of slip resistance after 1.1 million footfalls.

For more information please refer the Technical Installation Manual or speak to your Dura Composites Representative.

Load and Deflection Data

Deflection is shown in millimetres (mm). Green/red cell colours indicate above and below L/200, which is the equivalent of 0.5% deflection.

Uniformly Distributed Loads (UDL) - Clear Span (mm)

	700	800	900	1000	1100	1200	1300	1400	1500	1600	1700
3.0 kN/m ² UDL	0.3	0.5	0.8	1.1	1.5	2.0	2.6	3.4	4.4	5.6	7.1
4.0 kN/m ² UDL	0.5	0.7	1.1	1.5	2.1	2.7	3.5	4.5	5.8	7.3	9.1
5.0 kN/m ² UDL	0.6	0.9	1.4	1.9	2.6	3.4	4.5	5.7	7.2	9.0	11.2
6.0 kN/m ² UDL	0.8	1.1	1.6	2.3	3.1	4.1	5.3	6.8	8.6	10.7	13.2
7.0 kN/m ² UDL	0.9	1.3	1.9	2.6	3.6	4.7	6.2	7.9	10.0	12.5	15.3
8.0 kN/m ² UDL	1.1	1.5	2.1	3.0	4.1	5.4	7.0	9.1	11.4	14.2	17.3

Key: ● = Within limits ● = Out of limits

Uniformly Distributed Loads (UDL) - Max Clear Span by Deflection Ratio (mm)

	L/100	L/150	L/200	L/250	L/300
3.0 kN/m ² UDL	2340	2010	1810	1670	1570
4.0 kN/m ² UDL	2170	1850	1650	1520	1410
5.0 kN/m ² UDL	2020	1710	1520	1390	1280
6.0 kN/m ² UDL	1890	1590	1410	1280	1180
7.0 kN/m ² UDL	1780	1500	1320	1200	1110
8.0 kN/m ² UDL	1680	1420	1250	1130	1040

Safety Information

It is advisable to undertake a risk assessment, with particular focus on manual handling procedures. Wear appropriate gloves and coveralls to shield skin from abrasions. If shaping the product, it is essential to factor in the potential production of dust. To mitigate this, it is vital to either suppress the dust at source or employ effective extraction methods. We strongly recommend the use of appropriate respiratory protective equipment (RPE), specifically filtering facepiece class 3 (FFP3) masks, alongside adequate eye protection to guard against dust.

Recyclability

Return to manufacturer or downcycle.

Sustainability

The embodied carbon for A1-A3 (production stage) as defined in BS EN 15804 is 3.13kg CO₂ eq/unit.

Common Fixing Options

Some of the most common stainless steel fixing options are shown below. Consult your Dura Sales Representative for further fixings assistance.



S/L
Dome Washer
(BFX01005/BFX01003)



Shallow Recessed
Collar (FXM8SRC)

Warranty

25 year limited warranty available. Please register your product with us within 30 days of your invoice date. Visit www.duracomposites.com/warranty.