

Product Datasheet

d² Dura Slab Easylift 100

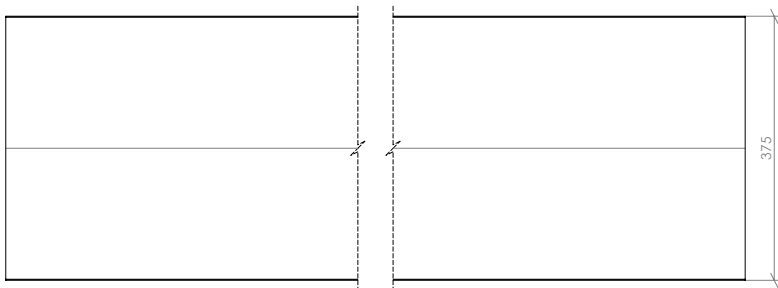


Product Description

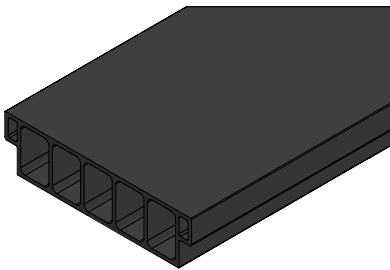
Dura Slab structural flooring panels are suitable for use as trench and access covers and heavy duty floor slabs, both for new build construction and refurbishment applications. Their lightweight design dramatically reduces the cost of installation, maintenance and transport versus alternatives such as steel or concrete and panels can be fitted with in-built lifting eyes, making them easy to deploy, without compromising on strength and safety. Part of our d² product range, Dura Slab Easylift 100 is designed to meet the load requirements of EN 124 Class B 125, has a max span of 1900mm and achieves a Class B fire rating in accordance with BS EN 13501-1.

Product Details

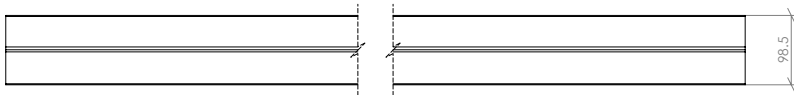
Gritted Surface	Length (mm)	Width (mm)	Height (mm)	Colours / Product Codes	Panel Weight (kg)	Weight (kg/sqm)
Top	6000	375	100	Dark Grey (DS04020)	109.2	52
Bottom				Dark Grey (DS04021)		



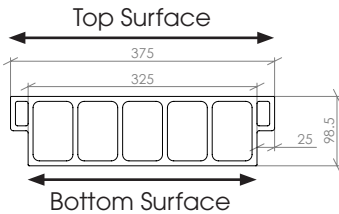
PLAN VIEW



ISOMETRIC VIEW



FRONT VIEW



Packaging

Please see the below table for relevant packaging information for d² Dura Slab Easylift 100.

Packaging	Product Information	
	Double Pallet	Triple Pallet
Maximum Products Per Pallet	10	18
Pallet Dimensions (mm)	6010 x 750 x 1160	6010 x 1100 x 1160
Pallet Weight (kg)	1152	2025

Colours

Please see below for our d² Dura Slab RAL colours.

Dura Colours	RAL Number
Dark Grey	7043

*Other colours available by special order may be subject to extended lead times.

Product Applications

Common applications for d² Dura Slab Easylift 100 include trench covers, industrial flooring, work platforms, tank covers, service duct covers, bridge decking, mezzanines and walkways.

Material

Glass Reinforced Polymer (GRP) Pultruded d² Dura Slab Profiles are manufactured by combining resins with pure glassfibre reinforcement. They are formed and cured in a continuous process creating a product of extraordinary strength and resilience d² Dura Slab is resistant against a wide range of chemicals and temperature spectrums. Material samples are available on request, along with a copy of our chemical resistance data.

Test Performance Overview

4S Slider Pendulum Test	BS EN 13501-1	BS 4592	FACTA	EN 124
PTV: 72 (dry)*, 62 (wet)*	Class B	Compliant	Class C	Class B

*Maintains 95% of slip resistance after 1.1 million footfalls.

For more information please refer the Technical Installation Manual or speak to your Dura Composites Representative.

Load and Deflection Data

Deflection is shown in millimetres (mm), with all columns denoting clear spans. Green/red cell colours indicate above and below L/100, which is the equivalent of 1% deflection. To view data for alternative standard load deflection such as L/200, or specific data for your project, visit www.duracomposites.com/power-of-composites.

Point Load (PL)

	1250mm	1500mm	1750mm	2000mm	2250mm	2500mm
10.0 kN/ PL	1.5	2	3	4.3	5.8	7.2
15.0 kN/ PL	2.9	4	5.4	7.4	9.2	11.6
20.0 kN/ PL	4.1	5.7	7.9	10.3	13	16.5
25.0 kN/ PL	4.9	7	9.9	13.1	16.9	22.3
30.0 kN/ PL	5.5	7.9	11.4	15.7	21.3	29.4
35.0 kN/ PL	5.7	8.6	12.7	18.3	26.3	37.6

Maximum Spans (mm)

Load	L/100	L/200
10 kN	4280	3410
15 kN	3550	2670
20 kN	3020	1950
25 kN	2640	1590
30 kN	2320	1430
35 kN	2090	1360

Uniformly Distributed Loads (UDL)

	2750mm	3000mm	3250mm	3500mm	3750mm	4000mm
5.0 kN/ UDL	3.7	5.2	7	9.2	11.9	15
8.0 kN/ UDL	5.6	7.8	10.7	14.2	18.3	23.1
11.0 kN/ UDL	7.5	10.5	14.4	19.2	24.8	31.3
14.0 kN/ UDL	9.7	13.6	18.5	24.4	31.3	39.3
17.0 kN/ UDL	12.5	17.2	23	29.9	37.9	47.1
20.0 kN/ UDL	16	21.5	28	35.7	44.5	54.7

Maximum Spans (mm)

Load	L/100	L/200
5 kN	6000	4490
8 kN	5060	3780
11 kN	4420	3390
14 kN	4030	3100
17 kN	3740	2850
20 kN	3470	2590

Safety Information

It is advisable to undertake a risk assessment, with particular focus on manual handling procedures. Wear appropriate gloves and coveralls to shield skin from abrasions. If shaping the product, it is essential to factor in the potential production of dust. To mitigate this, it is vital to either suppress the dust at source or employ effective extraction methods. We strongly recommend the use of appropriate respiratory protective equipment (RPE), specifically filtering facepiece class 3 (FFP3) masks, alongside adequate eye protection to guard against dust.

Recyclability

Return to manufacturer or downcycle.

Sustainability

The embodied carbon for A1-A3 (production stage) as defined in BS EN 15804 is 3.13kg CO₂ eq/kg.

Common Fixing Options

Some of the most common stainless steel fixing options are shown below.



S/L/XL Dome Washer
(BFX01005/BFX01003/
FX01004)



CAM Cover
(DRP0112)



Deep Recessed
Collar (FX01001)



Shallow Recessed
Collar (FXM8SRC)



J Clamp
(FX01128/9)

Warranty

25 year limited warranty available. Please register your product with us within 30 days of your invoice date. Visit www.duracomposites.com/warranty.