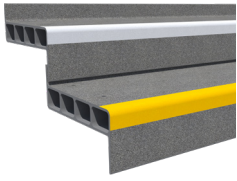


Product Datasheet

Dura Slab Structural Stair Treads

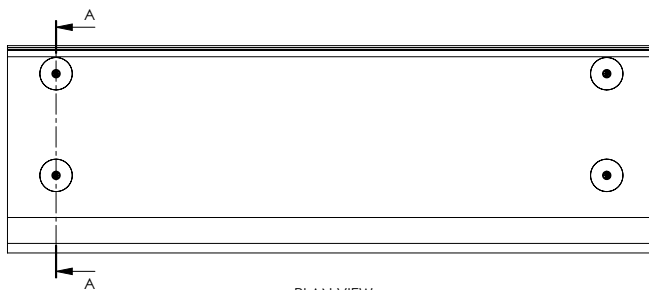


Product Description

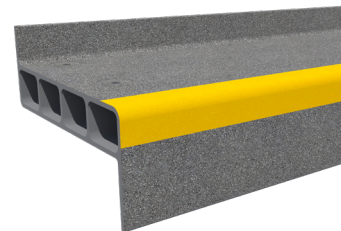
Dura Slab Structural Stair Treads are made from pultruded GRP and are lightweight, high strength, anti-slip, non-corrosive and non-conductive. With a thickness of 65mm they incorporate a number of ground-breaking features such as built-in-riser and fall to assist with drainage. The single unit construction speeds up install times, reducing costs and limiting disruption to end users. Where previous composite treads on the market have been limited in span capabilities, our treads span up to 2m clear span, achieving the required 5kN/m² at L/300 deflection, meaning additional supports can be avoided in most scenarios.

Product Details

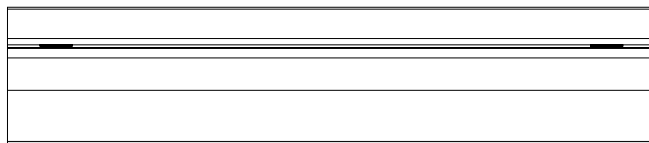
Product	Depth (mm)	Length (mm)	Thickness (mm)	Panel Weight (kg)	Weight (kg/sqm)	Colours / Product Codes
Stair Treads	320	4020	65	56.28	43.75	Tri-tone / Yellow DS20035
						Tri-tone / White DS20034



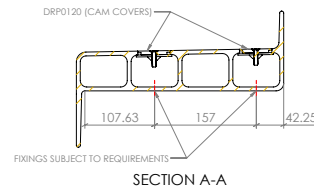
PLAN VIEW



ISOMETRIC VIEW



FRONT VIEW



SECTION A-A

Product Applications

Dura Slab Structural Stair Treads 65 are ideal for both new build footbridges and for essential footbridge refurbishment works. They are particularly efficient when used as a replacement for degraded timber treads and in scenarios where the footbridge or staircase is located in close proximity to overhead power lines or electrified areas thanks to their non-conductive properties.



Packaging

Please see the below table for relevant packaging information for Dura Slab Structural Stair Treads.

Packaging	Product Information
Maximum Products Per Pallet	24
Pallet Dimensions (mm)	1054 x 1150 x 750
Pallet Weight (kg)	1410

Colours

Please see below for our Structural Stair Treads RAL colours.

Dura Colours	RAL Number
Yellow 	1003
White 	9003

Material

Dura Slab Structural Stair Treads are manufactured by combining resins with pure glassfibre reinforcement. They are formed and cured in a continuous process creating a product of extraordinary strength and resilience. Dura Slab Structural Stair Treads are resistant against a wide range of chemicals and temperature spectrums. Material samples are available on request, along with a copy of our chemical resistance data.

Test Performance Overview

4S Slider Pendulum Test	BS EN 13501-1	BS 476		UV Certification
		Part 7	Indicative Part 20/21	
PTV: 78 (dry)*, 68 (wet)*	Class B	Class 1	38 Minute Burn Time	ISO 4892-2 Xenon Arc 5000hrs

*Maintaining a fantastic 97.5% of its original slip resistance after 1.1 million footfalls.

For more information please speak to your Dura Composites Representative.

Safety Information

It is advisable to undertake a risk assessment, with particular focus on manual handling procedures. Wear appropriate gloves and coveralls to shield skin from abrasions. If shaping the product, it is essential to factor in the potential production of dust. To mitigate this, it is vital to either suppress the dust at source or employ effective extraction methods. We strongly recommend the use of appropriate respiratory protective equipment (RPE), specifically filtering facepiece class 3 (FFP3) masks, alongside adequate eye protection to guard against dust.

Recyclability

Return to manufacturer or downcycle.

Sustainability

The embodied carbon for A1-A3 (production stage) as defined in BS EN 15804 is 3.13kg CO₂ eq/unit.

Common Fixing Options

Some of the most common fixing options are shown below.



L/XL
Dome Washer
(BFX01003/FX01004)



CAMs
(DRP0120)

Warranty & Design Life

25 year limited warranty available with an expected 60+ year design life. Please register your product with us within 30 days of your invoice date. Visit www.duracomposites.com/warranty.