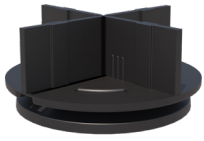


# Product Datasheet

## Dura Deck® Inspire 3mm Cross Spacer

### Product Description

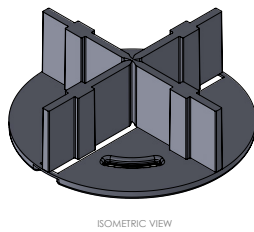
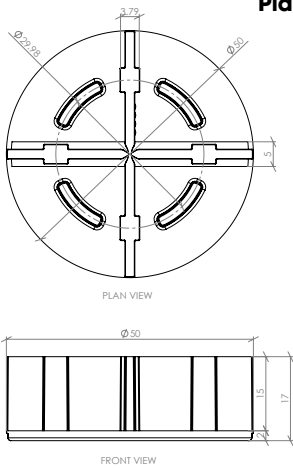


The 3mm Cross Spacer ensures consistent even spacing between your Dura Deck Inspire planks. With all 4 tabs in place, the Cross Spacer is used at the junction between four planks. With 2 tabs removed, the spacer is used where two planks meet. The 3mm Cross Spacer comprises two components, the Plastic Cradle and Rubber Base Plate. The Rubber Base Plate is used in conjunction with the Dura Aluminium Support System.

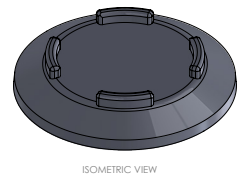
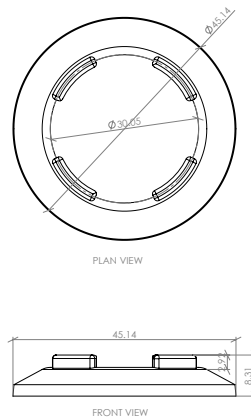
### Product Details

	Product Code	Diameter (mm)	Height (mm)	Pack Weight (kg)	Pack Quantity
Plastic Cradle	DDI09005X	50	17	0.64	100
Rubber Base Plate	DDI09005	45.14	8.31	0.31	100

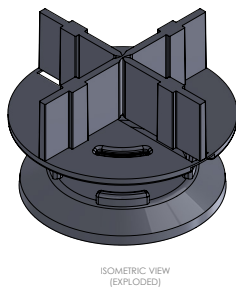
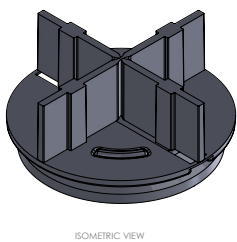
#### Plastic Cradle



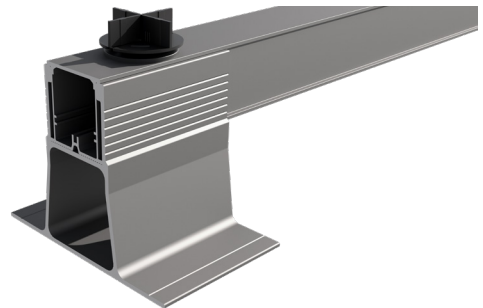
#### Rubber Base Plate



#### Plastic Cradle & Rubber Base Plate Interlock To Create 3mm Cross Spacer:



#### 3mm Cross Spacer In Use With Dura Aluminium Support System:



### Material

Plastic Cradle: 100% plastic.

Rubber Base Plate: 100% rubber.

### Sustainability

100% of the product can be recycled. If unsure, contact your local governing body/council for more information.

### Delivery

Delivery within 2-3 business days. Bespoke items also available on request.