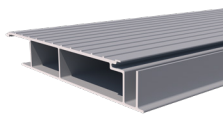


Product Datasheet

Dura Deck® Aluminium 27mm Positive Drain

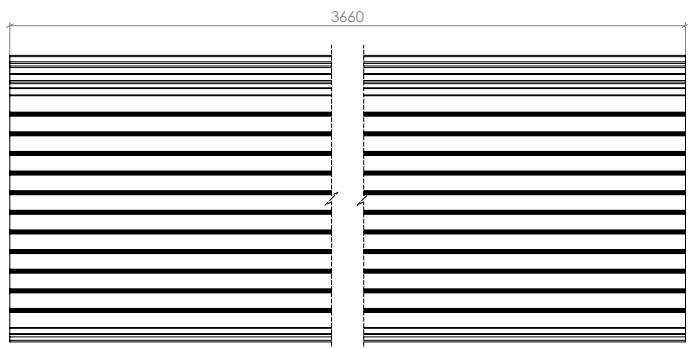
Product Description



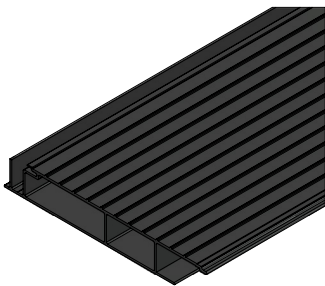
The Dura Deck® Aluminium 27mm Positive Drain deck boards offer positive drainage, making them particularly suited to use on balconies. Water is guided to a gutter with a floor area of over 6m² through the clever patented design of our decking board profiles (Patent No. GB 2 615 096). The 27mm Positive Drain decking is class A2 fl-s1 rating and addresses the dire need for improved fire safety on mid and hi-rise buildings. The board has a double skin with an anti-slip surface and uniform underside to provide an attractive in-built soffit detail. All Dura Deck Aluminium products have been UKAS accredited.

Product Details

Length (mm)	Face Cover (mm)	Thickness (mm)	Plank Weight (kg)	Weight Per m ² (kg)	Colours/Product Codes
3660	150	27	7.3	13.29	Cedar (DDA01001) Mist (DDA02001) Anthracite (DDA03001)



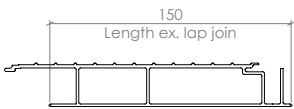
PLAN VIEW



ISOMETRIC VIEW



FRONT VIEW



SIDE VIEW

Product Applications & Material Type

- Balconies
- Rooftops
- Terraces
- Pedestrian walkways
- Hotels/Pubs/Restaurants
- Schools/Universities/Student Accomodation
- Public Buildings
- Commercial Flooring

Colour Options

The Dura Deck Aluminium range is available in a range of 3 attractive colours, Cedar, Mist and Anthracite. All three colours are held as standard stock at our UK Operations Centre for immediate call-off. Please check with your Dura sales representative prior to placing your order.



Test Performance Overview

The table below shows an overview of the Dura Deck Aluminium test results. For more information, please ask your Dura Composites Sales Representative.

Test	Purpose	Test Result
Anti-Slip Rating (4S Slider)	PTV Value in Wet & Dry Conditions	Average Dry PTV Value: 62 (Ultra low) Average Wet PTV Value: 53 (Ultra low)

Span & Loading Capabilities

Component	Span & Loading	Deflection
Dura Deck Aluminium 27mm PD	Up to 1400mm Span based on 2kN Point Load (@5kN/UDL)	L/200

Material

100% 6063 T6 grade Aluminium.

Fixing Method

Hidden Bi-Metallic Pan Head Self Drilling Screws.

Safety Information

It is advisable to undertake a risk assessment, with particular focus on manual handling procedures. Wear appropriate gloves and coveralls to shield skin from abrasions. If shaping the product, it is essential to factor in the potential production of dust. To mitigate this, it is vital to either suppress the dust at source or employ effective extraction methods. We strongly recommend the use of appropriate respiratory protective equipment (RPE), specifically filtering facepiece class 3 (FFP3) masks, alongside adequate eye protection to guard against dust.

Sustainability

The embodied carbon for A1-A3 (production stage) as defined in BS EN 15804 is 13.2kg CO₂ eq/unit.

Recyclability

Durable and long lasting our aluminium decking is 100% recyclable at the end of its use, making it eco-friendly.

Design Life & Warranty Information

Dura Deck Aluminium is part of the Dura Deck range. Our 30 year warranty covers material or manufacturing defects for your peace of mind, whilst the product boasts a minimum life expectancy of 60 years. As with all Dura Deck products, you must install the product according to our manufacturer recommendations to preserve your warranty. To activate your warranty, please register your product with us within 30 days of your invoice date at www.duracomposites.com/warranty.

Delivery

UK Mainland: delivery within 2-3 business days. Scottish Highlands & Islands, Isle of Wight and Northern Ireland: delivery within 4 business days. Please Note: Exports to Europe, Canada, Middle East and beyond can be arranged as required.

