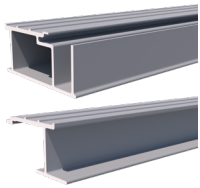


Technical Information Sheet

Dura Deck® Aluminium 27mm Positive Drain Trims



Product Description

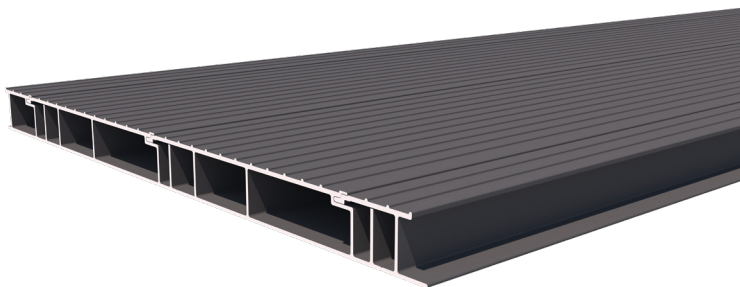
Available in 3 coordinating colours, the Dura Deck Aluminium trims allow for maximum versatility to suit any design. Incredibly lightweight and easy to handle, they make fitting safer for installers.

Our trims are powder coated to match your deck boards, providing a durable finishing touch that's hassle free and sure to impress.

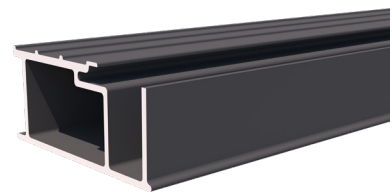
Product Details

	Colours/Product Codes	Length (mm)	Height (mm)	Width (mm)	Weight (kg)	Pack Quantity
Starter Trim	Cedar (DDA01003) Mist (DDA02003) Anthracite (DDA0003)	3660	27	61.2	3.07	1
Finishing Trim	Cedar (DDA01002) Mist (DDA02002) Anthracite (DDA03002)	3660	27	53	1.72	1

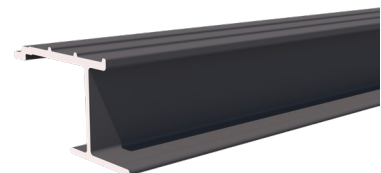
Trim Connection With Board:



Starter Trim:



Finishing Trim:



Material

6063 T6 grade Aluminium.

Safety Information

It is advisable to undertake a risk assessment, with particular focus on manual handling procedures. Wear appropriate gloves and coveralls to shield skin from abrasions. If shaping the product, it is essential to factor in the potential production of dust. To mitigate this, it is vital to either suppress the dust at source or employ effective extraction methods. We strongly recommend the use of appropriate respiratory protective equipment (RPE), specifically filtering facepiece class 3 (FFP3) masks, alongside adequate eye protection to guard against dust.

Recyclability

100% of the product can be recycled. If unsure, contact your local governing body/council for more information.

Sustainability

The embodied carbon for A1-A3 (production stage) as defined in BS EN 15804 is 13.2kg CO₂ eq/unit.

Delivery

Delivery within 2-3 business days. Bespoke items also available on request.