



# Capability Statement





# Company Overview

**Stuart Burns**  
Managing Director

**dura**  
composites

## Unlocking the Power of Composites >>

Established in the United Kingdom in 1996, Dura Composites is a leading designer, manufacturer, and supplier of high-performance composite products for a wide range of industries.

We are proud to be three-time winners of the prestigious King's Award for Enterprise and our pioneering d<sup>2</sup> product range includes walkway grating, non-combustible balcony decking, trench covers, structural profiles, handrailing, access structures, station platforms and more.

These solutions stand out in the market for their advanced low-carbon and weight-reducing designs, which minimise on-site logistics and environmental impact. Uniquely, our d<sup>2</sup> products are fully recyclable at the end of their lifecycle, aligning with our commitment to a circular economy.

## Our Purpose

Our commitment to innovation and sustainability ensures that businesses can achieve their net-zero goals without compromise. Our purpose is clear. By pioneering the world's lowest carbon walkways, we're redefining sustainable infrastructure - delivering safer, stronger, and greener solutions that are proven to support a better future for all.



## Our Mission

Our mission is to Unlock the Power of Composites™ for industry through our unique d<sup>2</sup> products, trusted information and inspiring experts. We empower our knowledgeable staff to inspire, educate and problem-solve for customers so they can employ durable, performance-improving and cost-effective solutions. To help us achieve our strategic vision, we will harness our global network of highly satisfied, passionate and connected customers to drive awareness of Dura as the experts in composite product solutions.



## Our Vision

Solve ambitious infrastructure problems with innovative recyclable products.

## Company Culture

Key to our success is that each of our departments has a clear vision which aligns to our core purpose - delivering the world's lowest-carbon walkways. Our team members are experts in their fields, supported by our People and Culture department, who are committed to ensuring we have "happy people, fuelled by careers that give purpose and feed souls".

We're dedicated to creating a workplace where employees thrive, finding fulfilment in their professional journey. Staff are encouraged to develop and grow together to deliver exceptional customer service, guided by the framework of the company's PRIDE values (Purpose, Respect, Innovation, Decisiveness & Encouragement).

Our commitment to helping our clients solve even the most ambitious of their infrastructure challenges is reflected in the work of our Client Success Team, a group of experienced professionals focused on delivering outstanding service and tailored solutions.

From initial consultation to post-installation support, our team ensures every project benefits from Dura Composites' expertise, innovation, and collaborative approach.




# Our Core Competencies

We are holders of over 140+ patents and design registrations and have a clear vision to solve ambitious infrastructure problems, sustainably.


The business has grown steadily since our formation in 1996 and we invest significantly to develop our resources, systems and infrastructure to facilitate continued expansion and innovation.




**25+**  
Years in  
business



**140+**  
Patents  
& unique  
designs



**10+**  
Global  
partners



**120+**  
Dedicated  
staff



**\$25m+**  
USD Sales  
revenue

We enable resilient, greener, and safer infrastructure with our d<sup>2</sup> product range, including walkway grating, balcony decking, trench covers, platforms and access structures. Our innovative, low-carbon, weight-reducing designs reduce environmental impact & on-site logistics. Uniquely, we offer end-of-life product repurposing, making us the ultimate choice for sustainable projects.

- Our Industries
- Construction
  - Rail
  - Marine
  - Energy
  - Utilities

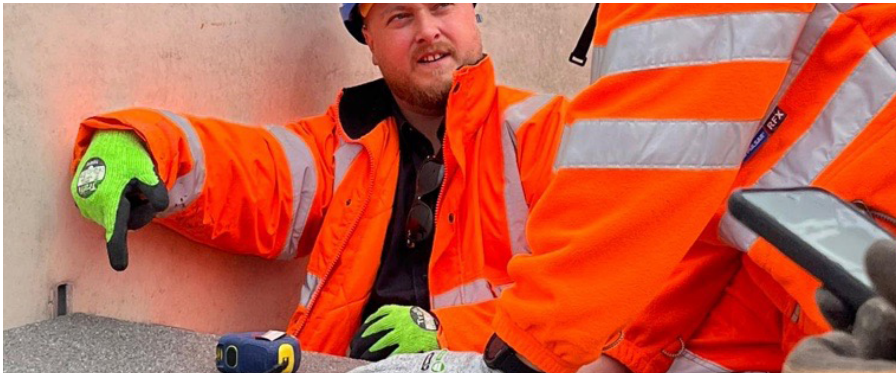
- Defence
  - Automotive
  - Building Remedials
  - Manufacturing
  - Retail

- Private & Public Civils
  - Stadiums & Arenas
  - Leisure
  - Renewables
  - Mining

- Working in Partnership
- Here are just a few of the many companies we work with and supply.
- Network Rail
  - Balfour Beatty
  - Transport for London
  - BAM
  - Multiplex
  - Morgan Sindall
  - Sir Robert McAlpine
  - Mace
  - Anglian Water
  - Hitachi Energy
  - Lintott
  - Robertson

- Ardmore
  - Willmott Dixon
  - T Clarke
  - Bouygues
  - Kier
  - Getjar
  - McGee
  - AmcoGiffen
  - Hammond ecs
  - Dyer & Butler
  - Abellio
  - Walcon

- Opecprime
  - OSL Rail
  - Cairn Cross
  - McNealy Brown
  - J Reddington
  - Arena
  - ES Global
  - Travis Perkins
  - Next Gen
  - Jewson
  - Taylor Wimpey
  - Metalu



Our Production Team

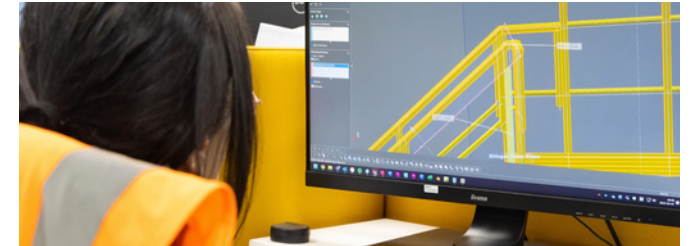


# Our Value Added Services

Our range of tools and services help unlock the benefit of composite products for architects, engineers, project managers and designers. Through our Design, Structural Design and Fabrication teams we can help our customers make data-driven decisions about the right product specifications for their projects.



**Install Consultation**



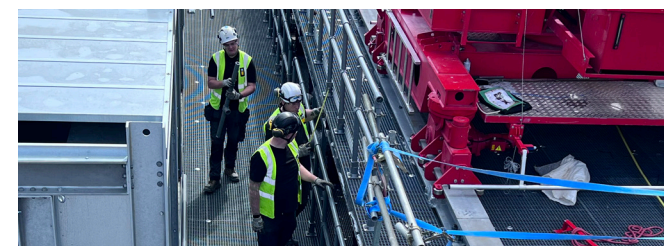
**Design & Engineering**



**3D Scanning & Drone Surveys**



**CPD Events**



**Installation**



**Fabrication & Build**



**Specialist Cutting**



**Transportation**



**CNC**



**Storage of Vested Stock**



**Dura Training Academy**



**Preventative Maintenance Inspections**

**3D Laser Scanning Service**



# Our Facilities

We combine our unique and extensive product range with exceptional service from our facilities both in the UK and abroad.

## UK Headquarters

Our UK Headquarters is home to our Sales, Marketing, Finance and HR teams as well as our Design and Engineering functions.

## Operations Centre

We have extensive warehousing facilities at our Operations Centre where we hold stock of all our popular products, allowing you to “call off” at any time, ensuring you have continuity of supply.

## Research & Development Centre

Our Research & Development Centre underpins our position as leaders in the design, manufacture and supply of innovative recyclable composite products and is key to our development and growth strategy.

## Fabrication Centre

We have extensive knowledge of every aspect of composite fabrications and our first-class fabrication facilities enable us to construct even the most complex projects safely, reliably and to the highest standards. Our fabrication experts use the latest technology, such as computer numerical controlled (CNC) machines, to produce intricate and bespoke designs.

## Production Centre

Our Production Centre is home to our specialist cutting and routing team who are highly-skilled in precision cutting of our materials to meet even the most complex of project needs. Our high-specification machinery can cater for scenarios such as non-square or diagonal cuts and acute angles.



In-House Testing at our Research & Development Centre

# Operations Service Team

Accelerate Your Project Delivery with Our Expert Installation Service

If you don't have resource to undertake installation of our low carbon d<sup>2</sup> products yourself, our dedicated Operations Services Team is here to help. With extensive qualifications and experience, they ensure that your project is delivered efficiently, safely, and without hassle. Our Operations Services Technicians hold IPAF and PASMA qualifications, while our Site Managers are consistently praised for their professionalism and dedication.



Our installation services cover a wide range of applications, including riser void coverings, rail and trackside projects, electrical and utilities installations, high-rise balconies, and Glass Reinforced Polymer (GRP) fabrications.

Our multi-skilled teams are equipped to operate in high-risk environments and support clients on projects of all sizes.

## Riser Void Installation Services

We provide a turnkey solution for riser void fall protection. Our specialist riser installation team is fully trained and equipped to install our safety solutions on high-rise new builds, refurbishments, and civil infrastructure projects. To save you time and money, we ensure that your mechanical and electrical (M&E) requirements are factored in at the specification stage.

## Balcony & Terrace Decking

If you have existing balconies or terraces that no longer comply with building regulations due to the ban on combustible materials, we can help you achieve compliance with the latest safety requirements. Our dedicated in-house specialists install our Dura Deck Inspire Porcelain and Dura Deck Aluminium decking systems for balconies, terraces, and walkways, ensuring full regulatory compliance using fire-rated products.

## GRP Access Structure Installation

If you've commissioned us to design and manufacture a GRP access structure for the energy, utilities, or rail sector, we also offer an installation service for this, alongside larger infrastructure walkways.

We encourage you to get in touch with our team to discuss your specific requirements.



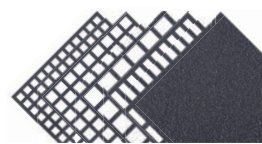


# Our Products

Composites provide significant advantages in construction, primarily due to their compatibility with modern building techniques and their cost-effectiveness during construction and installation. Through our pioneering innovations, they have become a mainstream material of choice for hundreds of applications.

First introduced in 2019, the d² range of products delivers the same exceptional performance you expect from Dura Composites but with significantly lower embodied carbon. Through intelligent design, manufacturing techniques and rigorous testing, we engineer sustainability and reliability into every product.

## Core d² Product Ranges



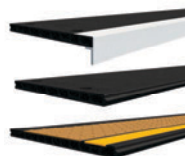
d² Dura Grating



d² Dura Pultruded Grating



d² Dura Slab



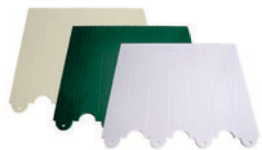
d² Dura Platform



d² Dura Profile



d² Dura Riser System



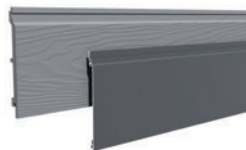
d² Dura Dagger Board



d² Dura Key Clamp Handrailing



d² Dura Deck



d² Dura Cladding

## Product Applications

Our products are ideal for (but not limited to):

- Walkways/Raised Flooring
- Structural/Non-Structural Flooring
- Rail Station Platforms/Depots
- Trackside Solutions
- Station Canopies
- Pedestrian Bridges
- Stadium Flooring
- Car Park Flooring
- Service Risers
- Trench Covers/Cable Troughs
- Utility Screening
- Marinas & Pontoons
- Commercial Decking
- Access Structures
- Balcony Decking
- Fire Rated Façades for Buildings



Our Core  
**Products**



# d<sup>2</sup> Dura Product Examples



d<sup>2</sup> Dura Platform



d<sup>2</sup> Dura Grating, Dura Slab & Dura Profile



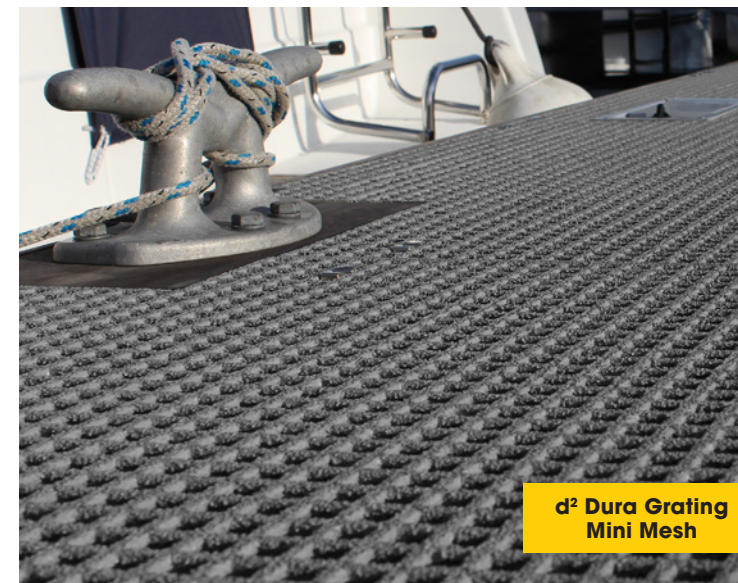
d<sup>2</sup> Dura Riser System



d<sup>2</sup> Dura Slab



d<sup>2</sup> Dura Profile



d<sup>2</sup> Dura Grating Mini Mesh



d<sup>2</sup> Key Clamp Handrailing



# Our Sustainability Priorities

We care about the legacy we leave. That’s why we provide market leading recyclable products that enable our customers to make sustainable choices, without compromising on performance or quality. Here are just a few of the ways we’re playing our part, to help our customers meet their sustainability goals:

- Sustainable & Ethical Business Priorities
- Decarbonisation by Design
- Circular Economy through Repurposing
- Local Employment
- Charitable Partnerships
- Noise Management
- Environmental Management ISO 14001
- Sustainable Packaging & Waste Management

## Our Product Sustainability

### GRP

Our d² range of GRP (Glass Reinforced Polymer) products combines cutting-edge design, advanced engineering, and rigorous testing to deliver exceptional performance with significantly reduced embodied carbon. Featuring weight-reducing designs, fire resistance, anti-slip surfaces, and corrosion-resistant properties, these solutions enhance safety, reduce on-site logistics, and minimise environmental impact. We lead the industry with the world’s lowest carbon GRP walkway products, and are the only company to offer on-site repurposing of GRP products, ensuring minimal environmental impact for our clients’ projects.

### Aluminium

Strong and tough, Dura Deck Aluminium is made from high grade T6 aluminium and is ideal for any application that requires an A2 Fire Rating (A2fl-s1) in accordance with BS EN13501, perfect for applications over 11-metres, such as residential and mixed-use developments, schools, universities, hospitals & libraries. Its made from 68% recycled content and is 100% recyclable at the end of its life, making it a sustainable and eco-friendly decking option.

### Porcelain Decking

A1 Fire-rated Porcelain is exceptionally strong as a material, and therefore has an extremely long lifecycle when compared to other decking solutions such as softwood. Our Dura Deck® Inspire planks are produced in Europe with 61% of pre-consumer recycled materials. All the raw materials used in the production come from a radius of 500 miles of the manufacturing plant and the products’ cardboard packaging materials are both made from recycled paper and are further recyclable themselves.



## Embodied Carbon

We are committed to providing our customers with the information they need to manage their carbon emissions. Our embodied carbon values for our moulded and pultruded Glass Reinforced Polymer range can be used to help during the planning, materials selection, design, construction and long-term management of your infrastructure.

### EPDs

Our Environmental Product Declarations (EPDs) provide clients and specifiers with the product data they need to make informed choices. They are transparent, objective reports that communicate how our GRP products impact the environment across their lifecycle.

If you would like to access our Environmental Product Declarations (EPDs) or Embodied Carbon reports, please visit our website at [www.duracomposites.com/sustainability](http://www.duracomposites.com/sustainability).



d² Dura Profile & Grating at Hydroelectric Power Station





# Safety

Health and safety is paramount within the sectors in which we operate, for all employees and visitors on-site, as well as everybody involved with the install of our products.



We are holders of a GOLD award from the Royal Society for the Prevention of Accidents (RoSPA) in recognition of our commitment to overarching occupational health and safety management systems which include practices such as leadership and workforce involvement.

We have also established a Safety, Health and Environment (SHE) Committee which works to identify potential hazards, risks, and safety issues in our workplace and develop plans and procedures to mitigate or eliminate those risks. It also promotes a safety culture amongst Dura Composites employees and serves as a platform for employees to raise safety-related concerns.

On site, our Operations Service team is committed to maintaining health and safety standards across all of its working environments. We invest in specialist health and safety training for all our staff, and our GRP installation operatives are IPAF and PASMA qualified.



# Quality & Compliance



We're proud to be ISO 9001 certified—a globally recognised quality management system that enables us to continually monitor and improve our processes, ensuring consistently high performance and service.

In addition, we have achieved ISO 14001 certification, which sets the standard for an effective environmental management system. Awarded by NQA, this accreditation demonstrates our commitment to enhancing environmental performance by minimising our environmental impact, reducing resource consumption, and improving overall efficiency.

We also hold ISO 45001 accreditation, the international standard for occupational health and safety, reinforcing our dedication to maintaining a safe and healthy working environment.

Furthermore, we are accredited by several leading international specialist construction associations. These accreditations provide our clients with complete confidence in our commitment to delivering the highest levels of service, quality, and compliance with industry standards.

# Accreditations, Awards & Certifications

As global leaders in multiple industries, we strive for excellence, we care about the environment and the impact we leave, and we are continuously innovating and improving our products, services and practices.

If you would like to see the full list of our Awards & Accreditations, visit [www.duracomposites.com/accreditations](http://www.duracomposites.com/accreditations).





# Our Global Reach



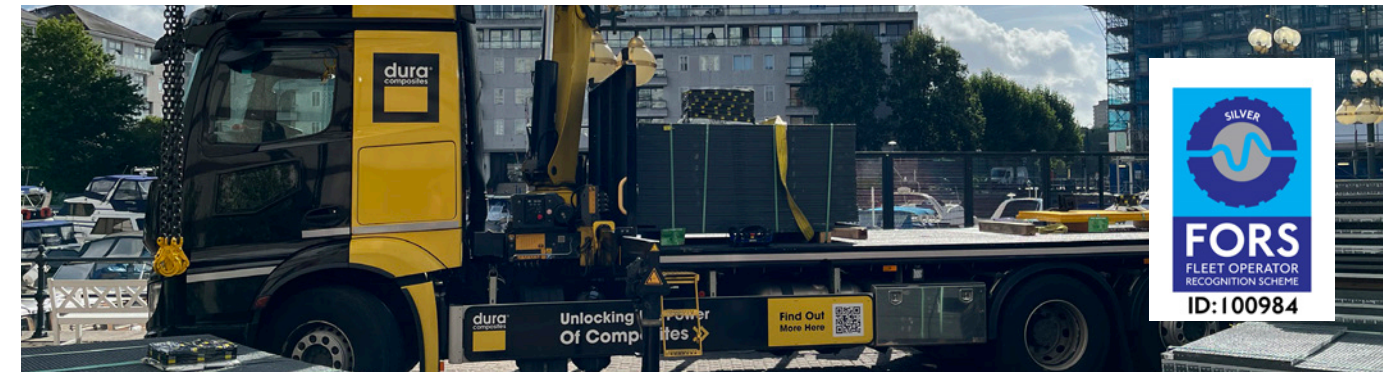
Dura Composites at the ADNOC exhibition

## Better Transport Options Than Ever Before

We offer a dedicated delivery service using our own Dura-branded vehicles with their recognisable YES number plates. We are holders of Silver accreditation under the FORS Scheme so you can trust in us to deliver your project materials safely and with the best customer service in the industry.

Benefits include:

- Faster Delivery Times
- Consistent Service Quality From Permanent Staff
- Real Time Tracking + Our Drivers Call Ahead With ETAs
- Lorry-Mounted Cranes for Smooth Offloading
- Reduced Risk of Damage or Loss
- Less Environmental Impact
- Meets Latest Safety Standards
- Dedicated Transport Customer Care Line



## Partnerships

We believe in championing new and disruptive innovation which can bring transformational change to the industry. Our partnerships and joint ventures include:

### Orange Train Wash



Empowered by Dura Composites, the Orange Train Wash is manufactured using our sustainable  $d^2$  range of safer, stronger, faster and proven GRP components. Able to clean one train carriage every 30 seconds, the Orange Train Wash revolutionises how train exteriors are maintained with trailblazing cleanliness standards and radical environmental, carbon reduction, installation, productivity and cost saving benefits.

### Mekina Industries



We have a joint venture partnership with Mekina Industries, specialists in innovative GRP permanent formwork solutions for critical infrastructure projects, including highways and railway bridges.

Mekina's GRP formwork is the most environmentally sustainable in the industry, fully recyclable at the end of its lifecycle and featuring up to 35% less embodied carbon than alternatives. They offer unrivalled testing, backed by over 50 years of GRP formwork experience and all the key accreditations you need.





Headquartered in the UK, we have a presence across the globe through our partnerships on every continent. If your projects are outside the UK please either get in touch with our distributors and partners below or send us an enquiry via the website.

**United Kingdom**

**Dura Composites Ltd**  
Dura House, Telford Road  
Clacton On Sea  
Essex, CO15 4LP  
  
T: +44 (0) 1255 423601  
E: info@duracomposites.co.uk

**Northern Ireland**

**Ridgeway**  
103 Airport Road West  
Belfast  
County Down, BT3 9ED  
  
T: +44 (0) 28 9045 4599  
E: info@ridgeway-online.com

**Republic of Ireland**

**Ridgeway**  
Ratoat Road  
Ashbourne  
County Meath, A84 XD98  
  
T: +353 (01) 802 7171  
E: info@ridgeway-online.com

**Netherlands, Belgium & Luxembourg**

**BFF Trading BV**  
Industriestraat 16  
1976 CV IJmuiden  
Netherlands  
  
T: +31 (0) 88 2102030  
E: info@bfftrading.nl

**Australia**

**Dura Composites Australia**  
Dura Composites Australia, 3 Varty  
Street, Weston NSW 2326  
  
T: 1300 043 872  
E: sales@duracomposites.com.au

**Middle East**

**Bahrain**  
**4K Building Materials**  
Ground Floor, Building 283  
Street 12 Tibli, Block 701  
Bahrain  
  
T: +973 (0) 17704706  
E: info@4kbn.com

**Qatar**  
**4K Qatar**  
4K Qatar WLL  
PO Box 5187, Doha, Qatar  
  
T: +974 (0) 4460 4104  
E: info@4kqatar.com

**Invicta GRP Systems**  
B1-A7, Warehouse 12  
GWC Logistics Park  
Al Wukair  
PO Box 23276, Doha, Qatar  
  
T: +974 441 4340  
E: enquiries@durasteel.net

**Kuwait**  
**Synthetic Wood**  
Synthetic Wood LLC, Shop No.7  
Building 1473, Block 1  
Al Rai Industrial Area  
Kuwait City  
  
T: +965 2474 7794  
E: syntheticwood@gmail.com

**Lebanon**  
**SilverDeco Studio**  
SilverDeco Studio (part of 4K Group)  
Missirian Building - 1st Floor  
Horsh Tabet Main Road  
Sin El Fil, Beirut  
  
T: +961 1 501515  
E: info@silverdeco.com

**UAE (Dubai)**  
**Invicta GRP Systems**  
Suite 1406 - 14th Floor  
The Metropolis, Business Bay  
PO Box 127626, Dubai, UAE  
  
T: +971 55 391 4507  
E: sarun.vs@invictagrpsystems.com

**UAE (Abu Dhabi)**  
**Invicta GRP Systems**  
Office M2 - Al Mujahid Building  
10th Street  
Old Mazda Road  
PO Box 63297, Abu Dhabi, UAE  
  
T: +971 55 391 4507  
E: sarun.vs@invictagrpsystems.com

**Saudi Arabia**  
**4K Building Materials**  
King Abdul Aziz Street  
Al Amamrah, Dammam  
Saudi Arabia  
  
T: +966 (0) 138642814  
E: info@4kbn.com

**Invicta Arabia Company Ltd.**  
8076 Al Jabal St.  
4197 Al Dana District  
35514 Al Jubail,  
Saudi Arabia  
  
T: +971 55 391 4507  
E: sarun.vs@invictagrpsystems.com



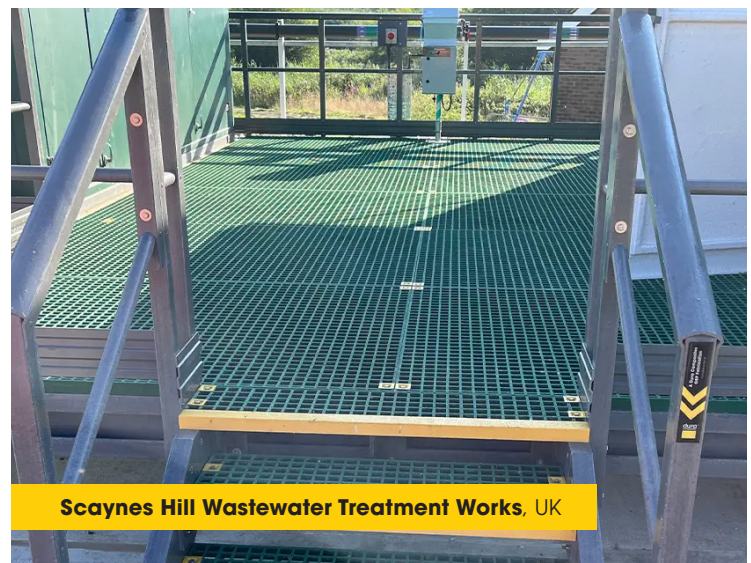
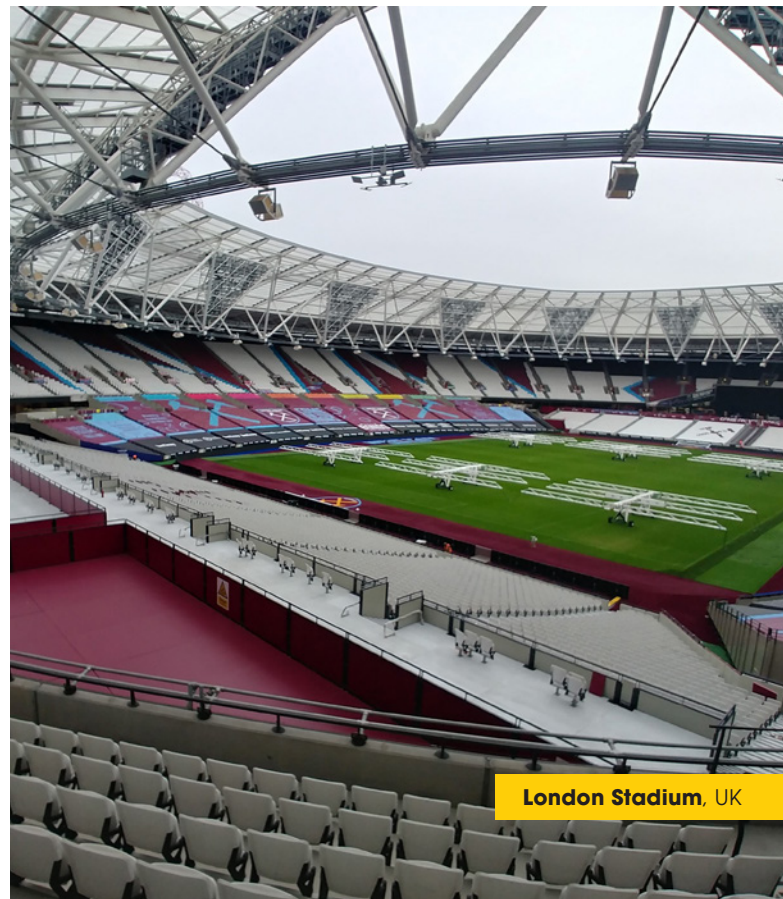
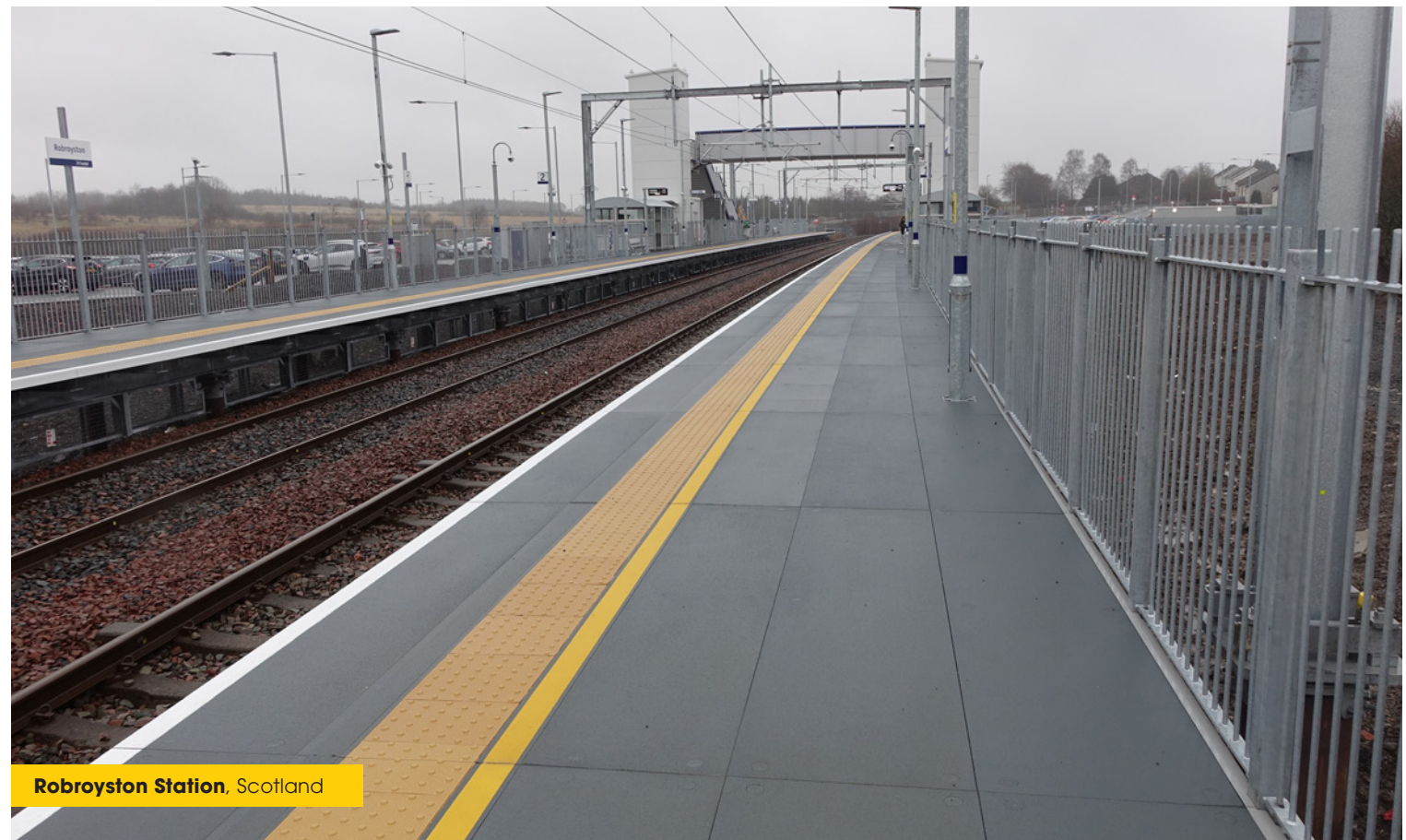
Homai Bridge, Australia



Victoria Street Station, Australia



# Our Project Case Studies





## Head Office

**Dura Composites Ltd**  
Dura House, Telford Road,  
Clacton On Sea,  
Essex, CO15 4LP  
United Kingdom

Tel: +44 (0)1255 423601  
Email: [info@duracomposites.com](mailto:info@duracomposites.com)

[www.duracomposites.com](http://www.duracomposites.com)

**dura**<sup>TM</sup>  
**composites**

**Unlocking the Power of Composites<sup>TM</sup> >>**

Due to our policy of continual improvement we reserve the right to change specifications at all times without prior notice.  
© 2025 Dura Composites - CAPAST02251

