

# Product Datasheet

## Dura Cladding Flush Aluminium Planks

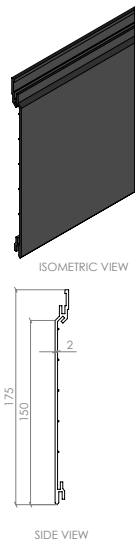
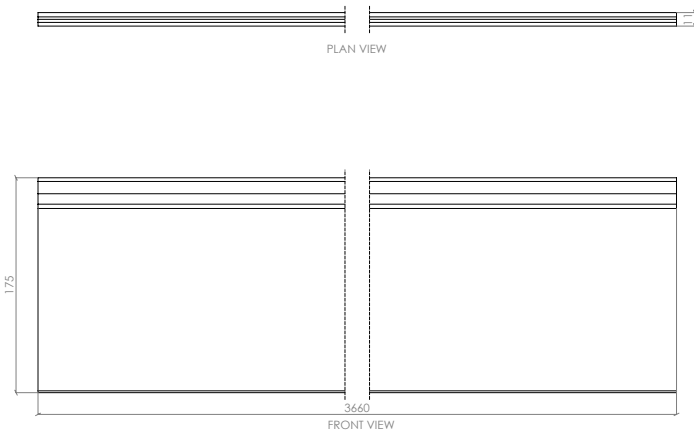


### Product Description

Dura Cladding Aluminium is a flush-fitting rainscreen cladding system with an A2 fire rating which is suitable for use by developers to remediate unsafe cladding on 11-18m buildings as well as for domestic refurbishment projects, high rise towers and large commercial buildings.

### Product Details

Length (mm)	Thickness (mm)	Visible Face Width When Installed (mm)	Maximum Fixing Span (mm)	Weight Per Lin m (kg)	Colours/Product Codes
3660	11	150	600	1.19	Anthracite (DCA03001) Cedar (DCA01001) Mist (DCA02001)



### Product Applications & Material Type

- Public & Private Buildings requiring an A2 Fire Rating
- New Builds
- Garden Rooms and Outbuildings
- Pubs & Hotels
- Commercial Buildings & Warehouses
- Domestic Properties

### Colour Options

The Dura Cladding Aluminium range is available in 3 modern contemporary colours as standard: Anthracite, Cedar and Mist. Other colours may be available by special order, subject to minimum order quantities.



## Test Performance Overview

The table below shows an overview of the Dura Cladding Flush Aluminium test results. For more information, please ask your Dura Composites Sales Representative.

<b>BS EN 13501-1:2018</b>	Class A2-s1, d0
<b>Dry Adhesion</b>	Pass
<b>Boiling Water Test</b>	Pass
<b>Acetic Acid Salt Spray Test</b>	Pass

## Material

6063 grade Aluminium (T6).

## Safety

It is advisable to undertake a risk assessment, with particular focus on manual handling procedures. Wear appropriate gloves and coveralls to shield skin from abrasions. If shaping the product, it is essential to factor in the potential production of dust. To mitigate this, it is vital to either suppress the dust at source or employ effective extraction methods. We strongly recommend the use of appropriate respiratory protective equipment (RPE), specifically filtering facepiece class 3 (FFP3) masks, alongside adequate eye protection to guard against dust.

## Recyclability

Durable and long lasting our aluminium decking is 100% recyclable at the end of its use, making it eco-friendly.

## Sustainability

The embodied carbon for A1-A3 (production stage) as defined in BS EN 15804 is 13.2kg CO<sub>2</sub> eq/unit.

## Design Life & Warranty Information

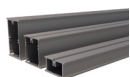
Dura Cladding Aluminium is part of the Dura Cladding range. It has a life expectancy of 60 years and comes with a 10-year warranty. As with all Dura Cladding products, you must install the product according to our manufacturer recommendations to preserve your warranty. To activate your warranty, please register your product with us within 30 days of your invoice date at [www.duracomposites.com/warranty](http://www.duracomposites.com/warranty).

## Delivery

UK Mainland: delivery within 2-3 business days. Scottish Highlands & Islands, Isle of Wight and Northern Ireland: delivery within 4 business days. Please Note: Exports to Europe, Canada, Middle East and beyond can be arranged as required.

## Compatibility

Dura Cladding Flush Resist is compatible with the below products.



**Dura Aluminium Bearers:** A2 fire rated aluminium bearers ideal for projects that require battening. Made from 6063 grade aluminium (T6) and greater strength to size ratio than traditional materials.



**Fast Fit 2-Part Trim System:** An innovative range of custom made aluminium trims, as well as no-fuss fixing screws, for ultimate ease of installation.

