

# Product Datasheet

## A2 Aluminium Bearers

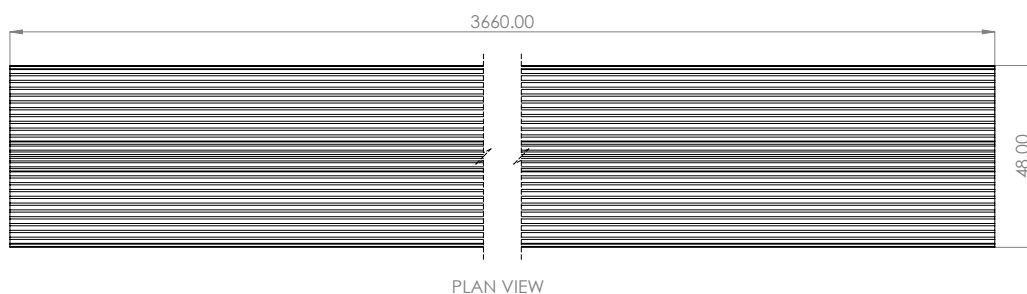
### Product Description



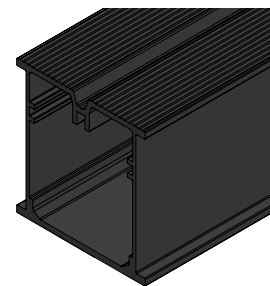
Our Dura Bearers can be easily combined with Dura Pedestals to suit all project needs. With 3 different heights of bearers and 8 different heights of pedestals, the Dura Composites system provides the most economical substructure combination on the market and is suitable for use as a decking substructure on external balconies, terraces, roof gardens, domestic gardens, or for industrial flooring. Alternatively, Dura Bearers are used as Battens for cladding substructure. Mill finish pedestals and bearers are also available on request.

### Product Details

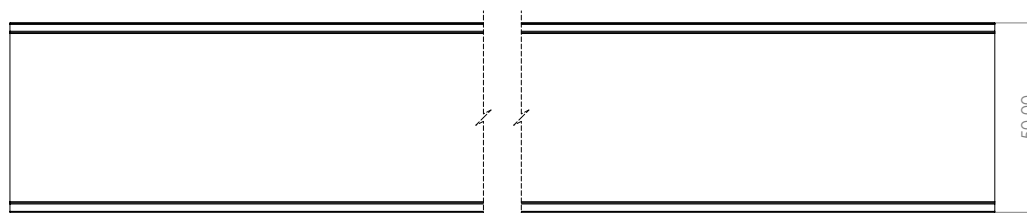
Product Name	Length (mm)	Width (mm)	Height (mm)	Weight (kg)	Pack Size
25mm	3660	48	25	3.39	1
50mm			50	3.53	
75mm			75	6.09	



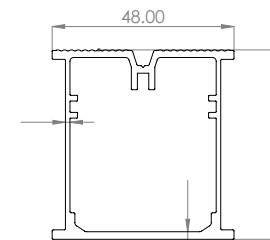
PLAN VIEW



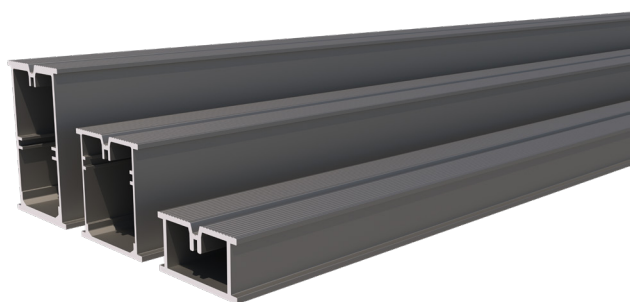
ISOMETRIC VIEW



FRONT VIEW

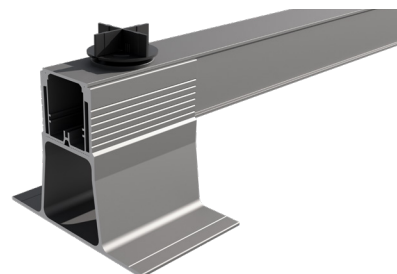


SIDE VIEW



75mm, 50mm, 25mm

If using Dura Bearers with Dura Deck Inspire porcelain, the Bearers can be inverted to allow for greater adherence of the 3mm Cross Spacer component.



### Product Applications & Material Type

- All Public & Private Building requiring an A2 Fire Rating
- Recessed/projected Galvanised Steel Balconies and recessed concrete balconies
- Roof Top & Raised Terraces
- Pub, Restaurant & Hotel Deck Areas
- Commercial Walkways
- Domestic Gardens
- Washbays & Elevated Walkways

## Bearer & Pedestal Combined Heights

Use any Dura Bearer with any Dura Pedestal to create 48 different combinations. Installation is faster, easier and more stable than with fiddly plastic pedestals. A precise height can be created (which can be as small as a 10mm adjustment when installing any bearer option in combination with the 25.5mm pedestal).



Product	Height (mm)	Heights Achieved with 25mm Bearer		Heights Achieved with 50mm Bearer		Heights Achieved with 75mm Bearer	
		Min Height (mm)	Max Height (mm)	Min Height (mm)	Max Height (mm)	Min Height (mm)	Max Height (mm)
Dura Pedestals	25.5	28	38	53	63	78	88
	36.5	38	53.5	53	83.5	78	103.5
	50.5	53	65.5	53	88	78	113
	85.5	88	100.5	88	123	113	148
	117.5	120	132.5	120	155	145	180
	152.5	155	167.5	155	190	180	215
	187.5	190	202.5	190	225	215	250
	222.5	225	237.5	225	260	250	285

## Slope Correction

Our system can be used on sloping or uneven ground with gradients of up to 10° degrees, which is the equivalent to an amazing 1:6 fall. The tallest 222.5mm pedestal offers 35mm of adjustment to suit the most demanding projects.

Slope Correction Option			
Pedestals	25mm Bearer	50mm Bearer	75mm Bearer
25.5mm	3°	3°	3°
36.5mm	6°	10°	10°
50.5mm	3°	10°	10°
85.5mm	3°	10°	10°
117.5mm	3°	10°	10°
152.5mm	3°	10°	10°
187.5mm	3°	10°	10°
222.5mm	3°	10°	10°

## Material & Finish

6063 Grade Aluminium (T6) with an Anthracite powder coated finish. Mill finish are also available on request.

## Fixing Method

Hidden Bi-Metallic Pan Head Self Drilling Screws.

## Recyclability

Durable and long lasting our aluminium decking is 100% recyclable at the end of its use, making it eco-friendly.

## Sustainability

The embodied carbon for A1-A3 (production stage) as defined in BS EN 15804 is 13.2kg CO<sub>2</sub> eq/unit.

## Design Life & Warranty Information

10 year warranty on painted surface finish. 60 year expected service life. As with all Dura Deck products, you must install the product according to our manufacturer recommendations to preserve your warranty. To activate your warranty, please register your product with us within 30 days of your invoice date at [www.duracomposites.com/warranty](http://www.duracomposites.com/warranty).

## Delivery

UK Mainland: delivery within 2-3 business days. Scottish Highlands & Islands, Isle of Wight and Northern Ireland: delivery within 4 business days. Please Note: Exports to Europe, Canada, Middle East and beyond can be arranged as required.