

# Environmental Product Declaration

[illegible]

## The World's Lowest Carbon Decking Components For Balcony Projects

# d² Dura Aluminium Bearer 50mm

Environmental Product Declaration | Type: Self-Declared



This covers all variants of d² Dura Aluminium Bearer 50mm.

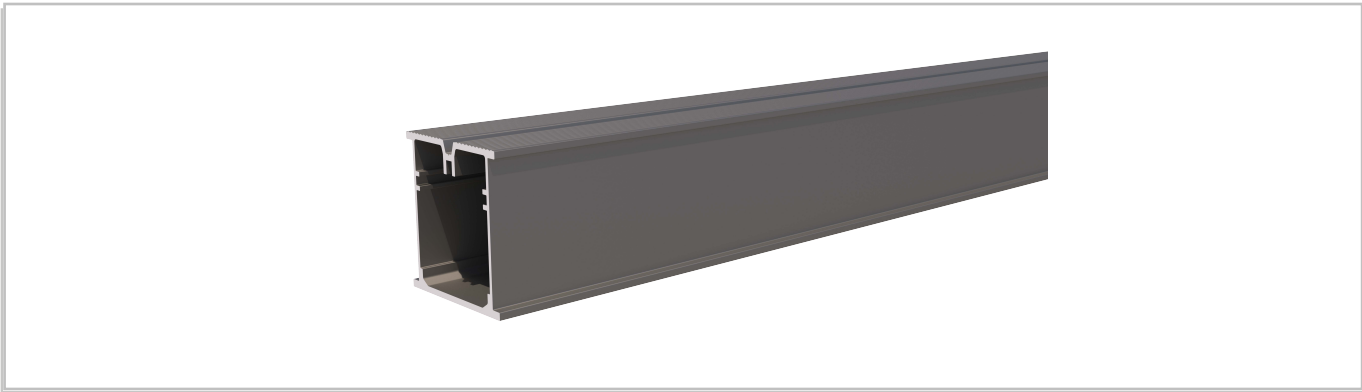
This is an ISO 14021 Type II EPD generated from a Life Cycle Assessment (LCA) performed using One Click LCA.

The results are a variant of a fully verified and published parent EPD and follow the Product Category Rules of EPD Hub Core PCR Version 1.2 (24 March 2025) and EN 15804+A2.

## Global Warming Potential (GWP)

The GWP quantifies a product’s contribution towards global warming and is sometimes referred to as its carbon footprint or embodied carbon.

Declared Unit		Mass		GWP Total A1-A3	GWP Fossil A1-A3
1	lm	1.03	kg/lm	6.94 kg CO2e/lm	6.83 kg CO2e/lm



## Product Information

Product Name	d² Dura Aluminum Bearer 50mm
Product Description	<p>Our Quickspan Bearers can be easily combined with Quickspan Pedestals or Quickspan Beams to suit all project needs. With 3 different heights of bearers, 8 different heights of pedestals and 2 different heights of beams, the Dura Composites system provides the most economical substructure combination on the market and is suitable for use as a decking substructure on external balconies, terraces, roof gardens, podium areas, or for industrial flooring. The design of the full system allows seamless adaptation to gradients of up to 10 degrees, eliminating the hassle of adjusting each pedestal individually.</p> <p>Our profiles are all made in the UK from UK manufactured Ingots which contain 68% recycled content. They are manufactured using the same extrusion process with differing dies.</p> <p>Alternatively, Dura Bearers are used as Battens for cladding substructure. Mill finish pedestals and bearers are also available on request.</p> <p>This EPD covers 1 section of Dura Aluminum Bearer 50mm with standard dimensions of 50mm x 48mm x 3660mm in Anthracite, although other bespoke dimensions and colours may be available.</p> <p>The total mass of extruded profile for this section is 3.77kg with a surface area of 0.79m².</p>
Manufacturer	Dura Composites Ltd
Address	Dura House, Telford Road, Clacton-On-Sea, Essex, UK, CO15 4LP
About The Manufacturer	Dura Composites designs low-carbon GRP and aluminium walkway systems through its award-winning d² range. Serving industrial, rail, marine and architectural sectors, our products combine structural integrity with verified sustainability. Backed by three King’s Awards for Enterprise, EPDs, fire compliance and Scope 3 data, Dura is globally recognised for innovation and trusted delivery.
Parent EPD Number	HUB-3594
Place of Production	UK
Period for Data	Q4 2024

The World's Lowest Carbon Decking Components For Balcony Projects

© Dura Composites 2026

T: +44 (0)1255 423601  
E: info@duracomposites.com  
W: www.duracomposites.com



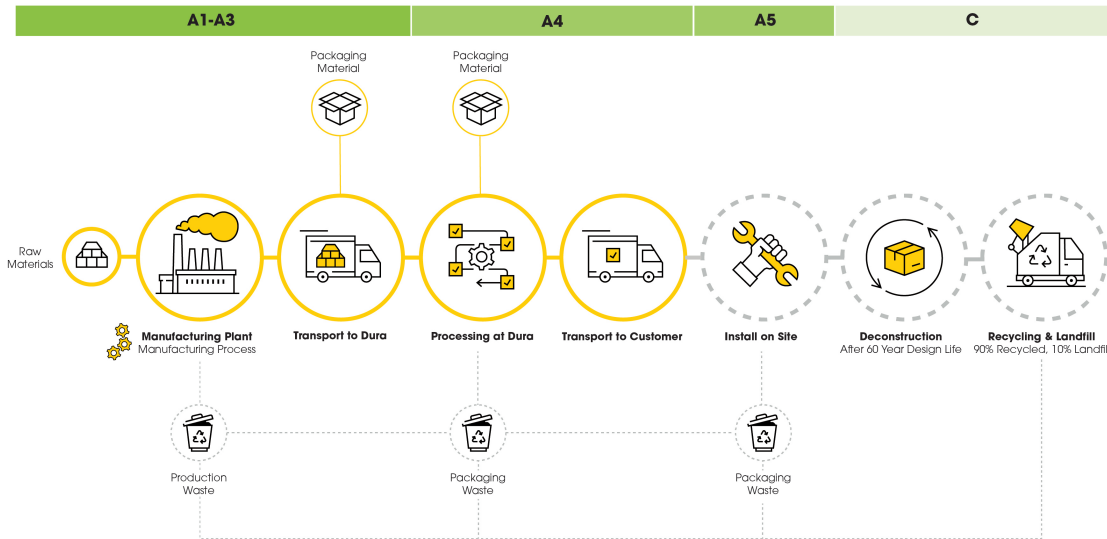
System Boundary

The LCA for this product has been performed for the following system boundary, the results for A1-A3 are provided in this EPD.

PRODUCT STAGE			CONSTRUCTION		USE STAGE							END OF LIFE STAGE				BEYOND THE SYSTEM BOUNDARY
A1	A2	A3	A4	A5	B1	B2	B3	B4	B5	B6	B7	C1	C2	C3	C4	D
X	X	X	X	MND	Modules Not Declared							X	X	X	X	X
Raw Materials	Transport To Site	Manufacturing	Transport	Construction	Use	Maintenance	Repair	Replacement	Refurbishment	Operational Energy	Operational Water	Deconstruction	Transport	Waste Processing	Disposal	Reuse, Recovery & Recycling

Scope of Assessment

The results have a cradle-to-gate scope, comprising raw materials extraction and supply (A1), transport (A2) and manufacturing (A3). The yellow highlights indicate the stages Dura Composites is involved in throughout the journey of the product.



Parent EPDs

The parent EPD used to generate this product variant has been third-party verified through EPD Hub. To access our independently verified EPDs, scan the QR code or visit [www.duracomposites.com/epd-reports](http://www.duracomposites.com/epd-reports).

